



Datasheet for ABIN6254027

anti-Retinoblastoma Binding Protein 8 antibody (pSer327)



[Go to Product page](#)

1 Image

Overview

Quantity:	100 µL
Target:	Retinoblastoma Binding Protein 8 (RBBP8)
Binding Specificity:	pSer327
Reactivity:	Human
Host:	Rabbit
Clonality:	Polyclonal
Conjugate:	This Retinoblastoma Binding Protein 8 antibody is un-conjugated
Application:	Western Blotting (WB)

Product Details

Immunogen:	Synthetic phospho-peptide corresponding to amino acid residues surrounding Ser327 conjugated to KLH
Cross-Reactivity:	Human
Predicted Reactivity:	non-human primate
Purification:	Antigen Affinity Purified from Pooled Serum

Target Details

Target:	Retinoblastoma Binding Protein 8 (RBBP8)
Alternative Name:	RBBP8 (RBBP8 Products)
Molecular Weight:	~100 kDa

Target Details

Gene ID:	5932
UniProt:	Q99708
Pathways:	Cell Division Cycle , DNA Damage Repair

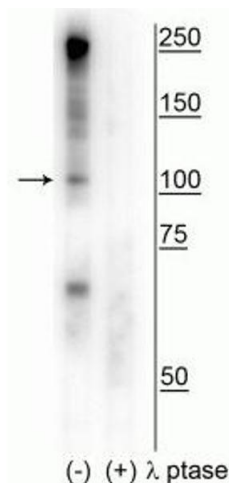
Application Details

Application Notes:	Optimal working dilution should be determined by the investigator.
Restrictions:	For Research Use only

Handling

Buffer:	100 μ L in 10 mM HEPES (pH 7.5), 150 mM NaCl, 100 μ g per ml BSA and 50 % glycerol.
Storage:	-20 $^{\circ}$ C

Images



Western Blotting

Image 1. Western blot of human T47D cell lysate showing specific immunolabeling of the ~100 kDa CtIP phosphorylated at Ser327 in the first lane (-). Phosphospecificity is shown in the second lane (+) where immunolabeling is completely eliminated by blot treatment with lambda phosphatase (λ -Ptase, 1200 units for 30 min).