

Datasheet for ABIN6254034
anti-GRM7 antibody (pSer862)[Go to Product page](#)

1 Image

Overview

| | |
|----------------------|-------------------------------------|
| Quantity: | 100 µL |
| Target: | GRM7 |
| Binding Specificity: | pSer862 |
| Reactivity: | Rat |
| Host: | Rabbit |
| Clonality: | Polyclonal |
| Conjugate: | This GRM7 antibody is un-conjugated |
| Application: | Western Blotting (WB) |

Product Details

| | |
|-----------------------|---|
| Immunogen: | Synthetic phospho-peptide corresponding to amino acid residues surrounding Ser862 conjugated to KLH |
| Cross-Reactivity: | Mouse (Murine), Rat (Rattus) |
| Predicted Reactivity: | bovine, canine, human, non-human primate, zebrafish |
| Purification: | Antigen Affinity Purified |

Target Details

| | |
|-------------------|--|
| Target: | GRM7 |
| Alternative Name: | GRM7 (GRM7 Products) |
| Molecular Weight: | ~102 kDa |

Target Details

| | |
|-----------|--|
| Gene ID: | 81672 |
| UniProt: | P35400 |
| Pathways: | Sensory Perception of Sound , cAMP Metabolic Process , Feeding Behaviour |

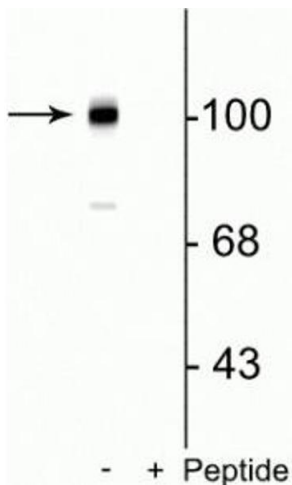
Application Details

| | |
|--------------------|--|
| Application Notes: | Optimal working dilution should be determined by the investigator. |
| Restrictions: | For Research Use only |

Handling

| | |
|----------|--|
| Buffer: | 100 μ L in 10 mM HEPES (pH 7.5), 150 mM NaCl, 100 μ g per ml BSA and 50 % glycerol. |
| Storage: | -20 $^{\circ}$ C |

Images



Western Blotting

Image 1. Western blot of mouse brain lysate showing the specific immunolabeling of the ~102 kDa mGluR7 protein phosphorylated at Ser862 in the first lane (-). Phosphospecificity is shown in the second lane (+) where immunolabeling is blocked by preadsorption of the phosphopeptide used as the antigen, but not by the corresponding non-phosphopeptide (not shown).