

Datasheet for ABIN6254067  
**anti-SLC6A3 antibody (pThr53)**[Go to Product page](#)

1 Image

2 Publications

## Overview

Quantity:	100 µL
Target:	SLC6A3
Binding Specificity:	pThr53
Reactivity:	Rat
Host:	Rabbit
Clonality:	Polyclonal
Conjugate:	This SLC6A3 antibody is un-conjugated
Application:	Western Blotting (WB), Immunohistochemistry (IHC)

## Product Details

Immunogen:	Synthetic phospho-peptide corresponding to amino acid residues surrounding Thr53 conjugated to KLH
Cross-Reactivity:	Rat (Rattus)
Purification:	Antigen Affinity Purified from Pooled Serum

## Target Details

Target:	SLC6A3
Alternative Name:	SLC6A3 ( <a href="#">SLC6A3 Products</a> )
Molecular Weight:	'55 kDa
Gene ID:	24898

## Target Details

UniProt:	<a href="#">P23977</a>
Pathways:	<a href="#">Dopaminergic Neurogenesis</a>

## Application Details

Application Notes:	Optimal working dilution should be determined by the investigator.
Restrictions:	For Research Use only

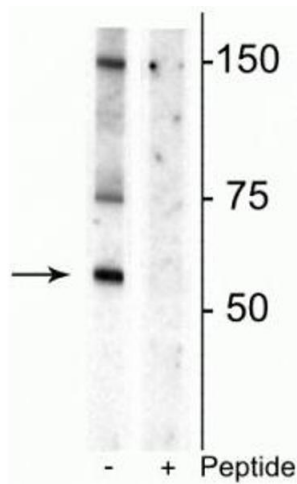
## Handling

Buffer:	100 µL in 10 mM HEPES ( pH 7.5), 150 mM NaCl, 100 µg per ml BSA and 50 % glycerol.
Storage:	-20 °C

## Publications

Product cited in:	Salimian, Peymani, Ghaedi, Nasr Esfahani: "Modulation in miR-200a/SIRT1 axis is associated with apoptosis in MPP+-induced SH-SY5Y cells." in: <b>Gene</b> , Vol. 674, pp. 25-30, (2018) ( <a href="#">PubMed</a> ).
-------------------	---

## Images



### Western Blotting

**Image 1.** Western blot of rat striatal lysate showing specific immunolabeling of the ~55 kDa glycosylated form of the DAT protein phosphorylated at Thr53 in the first lane (-). Phosphospecificity is shown in the second lane (+) where immunolabeling is blocked by preadsorption of the phosphopeptide used as the antigen, but not by the corresponding non-phosphopeptide (not shown).