

Datasheet for ABIN6254071  
**anti-MECP2 antibody (pSer421)**[Go to Product page](#)

1 Image

1 Publication

## Overview

Quantity:	100 µL
Target:	MECP2
Binding Specificity:	pSer421
Reactivity:	Mouse
Host:	Rabbit
Clonality:	Polyclonal
Conjugate:	This MECP2 antibody is un-conjugated
Application:	Western Blotting (WB)

## Product Details

Immunogen:	Synthetic phospho-peptide corresponding to amino acid residues surrounding Ser421 conjugated to KLH
Cross-Reactivity:	Mouse (Murine), Rat (Rattus)
Predicted Reactivity:	human, non-human primate
Purification:	Antigen Affinity Purified from Pooled Serum

## Target Details

Target:	MECP2
Alternative Name:	MECP2 ( <a href="#">MECP2 Products</a> )
Molecular Weight:	'55 kDa

## Target Details

Gene ID:	17257
UniProt:	<a href="#">Q9Z2D6</a>
Pathways:	<a href="#">Inositol Metabolic Process</a> , <a href="#">Chromatin Binding</a> , <a href="#">Synaptic Membrane</a>

## Application Details

Application Notes:	Optimal working dilution should be determined by the investigator.
Restrictions:	For Research Use only

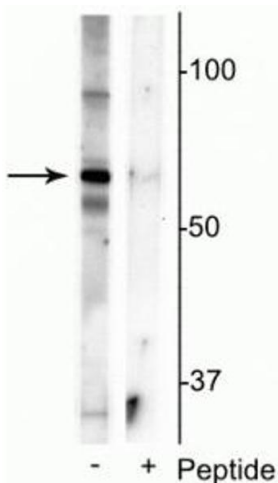
## Handling

Buffer:	100 µL in 10 mM HEPES ( pH 7.5), 150 mM NaCl, 100 µg per ml BSA and 50 % glycerol.
Storage:	-20 °C

## Publications

Product cited in:	Salimian, Peymani, Ghaedi, Nasr Esfahani: "Modulation in miR-200a/SIRT1 axis is associated with apoptosis in MPP+-induced SH-SY5Y cells." in: <b>Gene</b> , Vol. 674, pp. 25-30, (2018) ( <a href="#">PubMed</a> ).
-------------------	---

## Images



### Western Blotting

**Image 1.** Western blot of mouse whole brain lysate showing specific immunolabeling of the ~55 kDa truncated MeCP2 protein phosphorylated at Ser421 in the first lane (-). Phosphospecificity is shown in the second lane (+) where immunolabeling is blocked by preadsorption of the phosphopeptide used as the antigen, but not by the corresponding non-phosphopeptide (not shown).