



[Go to Product page](#)

Datasheet for ABIN6254085

anti-GRIN2C antibody (pSer1244)

1 Image

Overview

Quantity:	100 µL
Target:	GRIN2C
Binding Specificity:	pSer1244
Reactivity:	Rat
Host:	Rabbit
Clonality:	Polyclonal
Conjugate:	This GRIN2C antibody is un-conjugated
Application:	Western Blotting (WB)

Product Details

Immunogen:	Synthetic phospho-peptide corresponding to amino acid residues surrounding Ser1244 conjugated to KLH
Cross-Reactivity:	Mouse (Murine), Rat (Rattus)
Predicted Reactivity:	bovine, canine, human, non-human primates
Purification:	Antigen Affinity Purified from Pooled Serum

Target Details

Target:	GRIN2C
Alternative Name:	GRIN2C (GRIN2C Products)
Molecular Weight:	~140 kDa

Target Details

Gene ID:	24411
UniProt:	Q00961
Pathways:	Synaptic Membrane

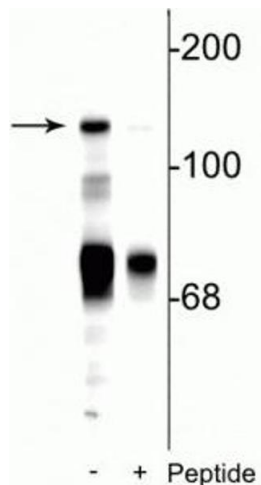
Application Details

Application Notes:	Optimal working dilution should be determined by the investigator.
Restrictions:	For Research Use only

Handling

Buffer:	100 μ L in 10 mM HEPES (pH 7.5), 150 mM NaCl, 100 μ g per ml BSA and 50 % glycerol.
Storage:	-20 $^{\circ}$ C

Validation report #104530 for Western Blotting (WB)



Western Blotting

Image 1. Western blot of rat cerebellar lysate showing specific immunolabeling of the ~140 kDa NR2C subunit of the NMDA receptor phosphorylated at Ser1244 in the first lane (-). Phosphospecificity is shown in the second lane (+) where immunolabeling is blocked by preadsorption of the phosphopeptide used as the antigen, but not by the corresponding non-phosphopeptide (not shown).