

Datasheet for ABIN6254107

**anti-MEG3 antibody (pSer679, pSer683)**[Go to Product page](#)**1** Image

## Overview

Quantity:	100 µL
Target:	MEG3 (FAM129B)
Binding Specificity:	pSer679, pSer683
Reactivity:	Human
Host:	Rabbit
Clonality:	Polyclonal
Application:	Western Blotting (WB)

## Product Details

Immunogen:	Synthetic phospho-peptide corresponding to amino acid residues surrounding Ser679/683 conjugated to KLH
Cross-Reactivity:	Mouse (Murine)
Predicted Reactivity:	human, non-human primates
Purification:	Antigen Affinity Purified from Pooled Serum

## Target Details

Target:	MEG3 (FAM129B)
Alternative Name:	FAM129B ( <a href="#">FAM129B Products</a> )
Molecular Weight:	~83 kDa
Gene ID:	64855

## Target Details

UniProt: [Q96TA1](#)

## Application Details

Application Notes: Optimal working dilution should be determined by the investigator.

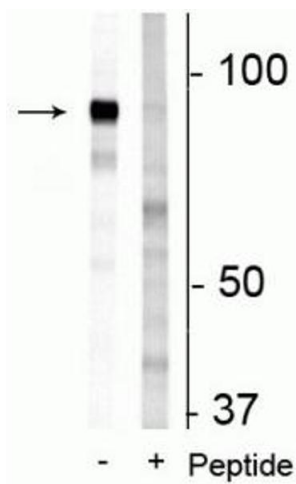
Restrictions: For Research Use only

## Handling

Buffer: 100  $\mu$ L in 10 mM HEPES ( pH 7.5), 150 mM NaCl, 100  $\mu$ g per ml BSA and 50 % glycerol.

Storage: -20  $^{\circ}$ C

## Images



### Western Blotting

**Image 1.** Western blot of 3T3 cell lysate showing specific immunolabeling of the ~83 kDa FAM129B protein phosphorylated at Ser679/683 in the first lane (-). Phosphospecificity is shown in the second lane (+) where immunolabeling is blocked by preadsorption of the phosphopeptide used as the antigen, but not by the corresponding non-phosphopeptide (not shown).