

Datasheet for ABIN6254115
anti-SLC6A4 antibody (pThr276)[Go to Product page](#)

1 Image

Overview

Quantity:	100 µL
Target:	SLC6A4
Binding Specificity:	pThr276
Reactivity:	Rat
Host:	Rabbit
Clonality:	Polyclonal
Conjugate:	This SLC6A4 antibody is un-conjugated
Application:	Western Blotting (WB)

Product Details

Immunogen:	Synthetic phospho-peptide corresponding to amino acid residues surrounding Thr276 conjugated to KLH
Cross-Reactivity:	Mouse (Murine), Rat (Rattus)
Predicted Reactivity:	bovine, human, non-human primate, sheep, Xenopus
Purification:	Antigen Affinity Purified from Pooled Serum

Target Details

Target:	SLC6A4
Alternative Name:	Slc6a4 (SLC6A4 Products)
Molecular Weight:	'76 kDa

Target Details

Gene ID: 25553

UniProt: [P31652](#)

Application Details

Application Notes: Optimal working dilution should be determined by the investigator.

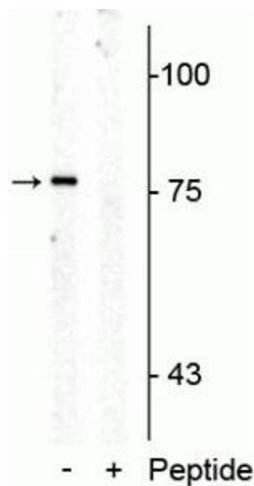
Restrictions: For Research Use only

Handling

Buffer: 100 μ L in 10 mM HEPES (pH 7.5), 150 mM NaCl, 100 μ g per ml BSA and 50 % glycerol.

Storage: -20 $^{\circ}$ C

Images



Western Blotting

Image 1. Western blot of rat mid brain membrane lysate showing specific immunolabeling of the ~76 kDa SERT protein phosphorylated at Thr276 in the first lane (-). Phosphospecificity is shown in the second lane (+) where Immunolabeling is blocked by preadsorption of the phosphopeptide used as antigen, but not by the corresponding non-phosphopeptide (not shown).