



[Go to Product page](#)

Datasheet for ABIN6254149

anti-GFP antibody

5 Images

Overview

Quantity:	300 µg
Target:	GFP
Reactivity:	Aequorea victoria
Host:	Goat
Clonality:	Polyclonal
Conjugate:	This GFP antibody is un-conjugated
Application:	Western Blotting (WB), Immunofluorescence (IF), Immunohistochemistry (Frozen Sections) (IHC (fro)), Immunohistochemistry (Paraffin-embedded Sections) (IHC (p)), Immunoelectron Microscopy (IEM)

Product Details

Immunogen:	Purified recombinant GFP peptide produced in E. coli.
Isotype:	IgG
Specificity:	In 293HEK cells transfected with cds plasmid detects a band of 27 kDa by Western blot. This antibody also recognizes Venus/GFP and does not cross-react to mCherry/red fluorescent proteins.
Cross-Reactivity (Details):	YFP, GFP, EGFP, Venus
Characteristics:	Venus Fluorescent Protein
Purification:	epitope affinity purified

Target Details

Target: GFP

Alternative Name: Venus ([GFP Products](#))

Target Type: Viral Protein

Application Details

Application Notes: Optimal working dilution should be determined by the investigator.

Restrictions: For Research Use only

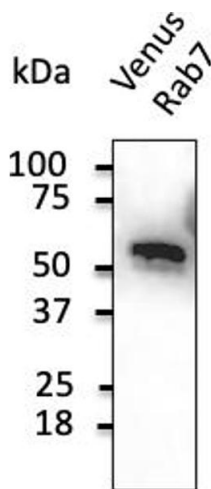
Handling

Handling Advice: The antibody solution should be gently mixed before use.

Storage: 4 °C,-20 °C

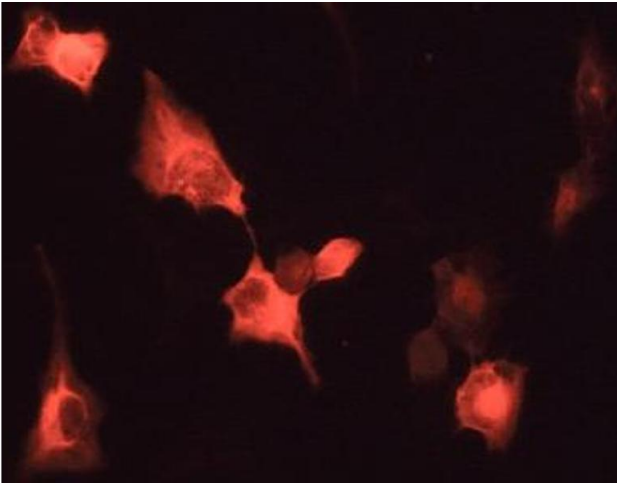
Storage Comment: For continuous use, store at 2-8 deg,C for one-two days. For extended storage, store in -20 deg,C freezer. Working dilution samples should be discarded if not used within 12 hours.

Images



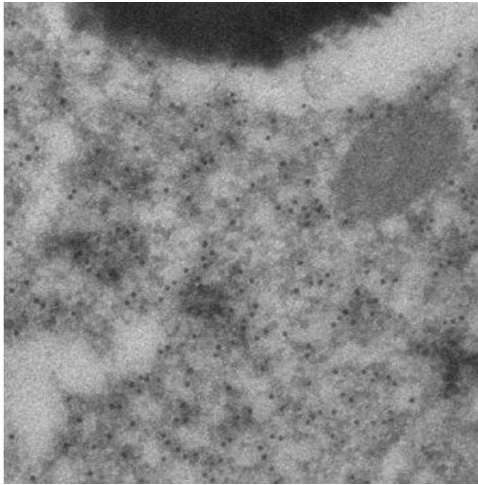
Western Blotting

Image 1.



Immunofluorescence

Image 2. Immunofluorescence - anti-Venus Ab in 293HEK Cells with Venus Protein at 1/50 dilution, Cells were fixed With 4% of PFA



Immunoelectron Microscopy

Image 3. Immunogold labeling of epithelium cells

Please check the [product details page](#) for more images. Overall 5 images are available for ABIN6254149.