

Datasheet for ABIN6254162
anti-Cathepsin D antibody (C-Term)

12 Images

1 Publication

[Go to Product page](#)

Overview

Quantity:	600 µg
Target:	Cathepsin D (CTSD)
Binding Specificity:	C-Term
Reactivity:	Human, Mouse, Rat, Hamster, Monkey, Pig, Dog, Cow, Guinea Pig, Horse, Rabbit, Cat, Avian, Chicken, Donkey, Goat, Sheep
Host:	Goat
Clonality:	Polyclonal
Conjugate:	This Cathepsin D antibody is un-conjugated
Application:	Western Blotting (WB), Immunohistochemistry (Paraffin-embedded Sections) (IHC (p)), Immunofluorescence (IF), Immunohistochemistry (Frozen Sections) (IHC (fro)), Immunoelectron Microscopy (IEM)

Product Details

Immunogen:	Purified recombinant peptide derived from within residues 275 aa to the C-terminus of human Cathepsin D produced in E. coli.
Isotype:	IgG
Specificity:	This antibody gives a positive signal in the following human (Jurkat, HT1080, HUH, MDA-MB-231, ARPE19, SH-SY5Y), canine (MDCK) and monkey (COS-7) whole cell lysates.
Characteristics:	Cathepsin D
Purification:	epitope affinity purified

Target Details

Target:	Cathepsin D (CTSD)
Alternative Name:	Cathepsin D (CTSD Products)
Pathways:	Peptide Hormone Metabolism

Application Details

Application Notes:	Optimal working dilution should be determined by the investigator.
Restrictions:	For Research Use only

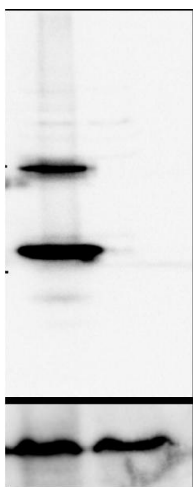
Handling

Handling Advice:	The antibody solution should be gently mixed before use.
Storage:	4 °C,-20 °C
Storage Comment:	For continuous use, store at 2-8 deg,C for one-two days. For extended storage, store in -20 deg,C freezer. Working dilution samples should be discarded if not used within 12 hours.

Publications

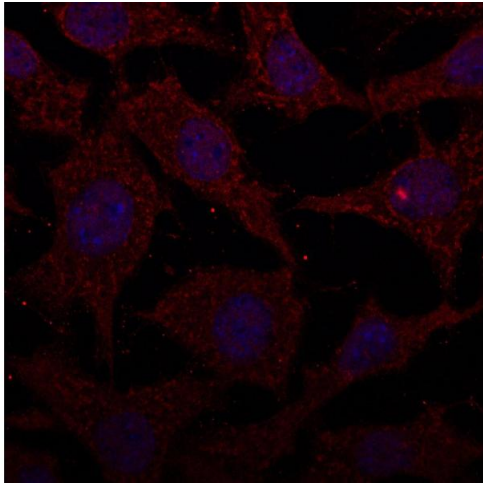
Product cited in:	Kharaziha, Panaretakis: "Dynamics of Atg5-Atg12-Atg16L1 Aggregation and Deaggregation." in: Methods in enzymology , Vol. 587, pp. 247-255, (2017) (PubMed).
-------------------	--

Validation report #101202 for Western Blotting (WB)



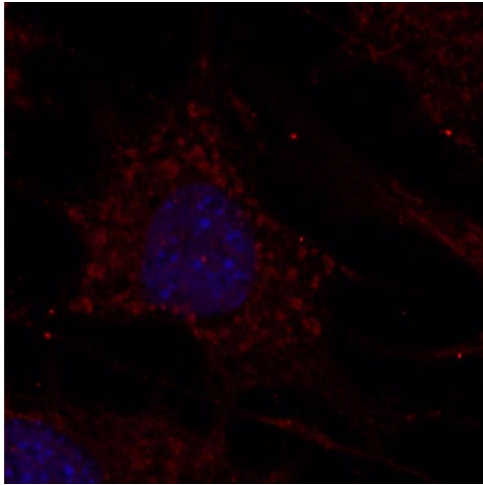
Western Blotting

Image 1.



Immunofluorescence

Image 2. Immunofluorescence - anti-CTSD Ab at 1/100 dilution in NHI/3T3 cells, cells were fixed with methanol and permeabilized With 0.1% saponin,



Immunofluorescence

Image 3. Immunofluorescence - anti-CTSD Ab at 1/100 dilution in NHI/3T3 cells, cells were fixed with methanol and permeabilized With 0.1% saponin,

Please check the [product details page](#) for more images. Overall 12 images are available for ABIN6254162.