

Datasheet for ABIN6254169
anti-Caveolin 2 antibody (N-Term)

5 Images

[Go to Product page](#)

Overview

Quantity:	600 µg
Target:	Caveolin 2 (CAV2)
Binding Specificity:	N-Term
Reactivity:	Human, Mouse, Rat, Cow, Dog, Guinea Pig, Rabbit, Sheep, Horse, Monkey, Pig, Hamster, Goat, Donkey, Chicken, Cat, Avian
Host:	Goat
Clonality:	Polyclonal
Conjugate:	This Caveolin 2 antibody is un-conjugated
Application:	Western Blotting (WB), Immunohistochemistry (Paraffin-embedded Sections) (IHC (p)), Immunofluorescence (IF), Immunohistochemistry (Frozen Sections) (IHC (fro))

Product Details

Immunogen:	Recombinant peptide derived from within residues 50 aa to the N-terminus of human CAV2 produced in E. coli.
Isotype:	IgG
Specificity:	Detects a band of approximately 20 kDa by Western blot in HaCat cell lysate and 45 kDa CAV2-GFP transfected cell lysate. This Ab does not recognize CAV1.
Characteristics:	Caveolin-2
Purification:	epitope affinity purified

Target Details

Target:	Caveolin 2 (CAV2)
Alternative Name:	CAV2 (CAV2 Products)
Pathways:	Regulation of G-Protein Coupled Receptor Protein Signaling , Skeletal Muscle Fiber Development

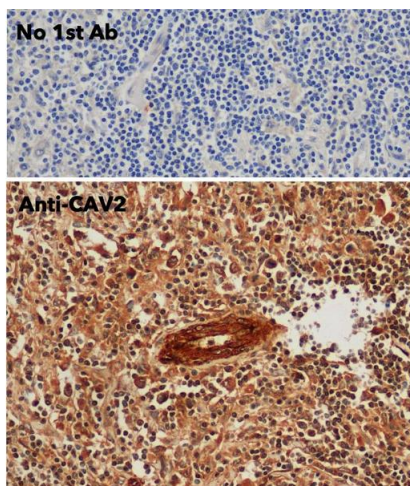
Application Details

Application Notes:	Optimal working dilution should be determined by the investigator.
Restrictions:	For Research Use only

Handling

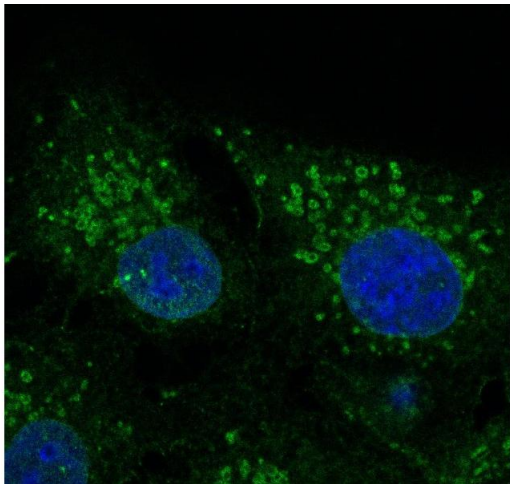
Handling Advice:	The antibody solution should be gently mixed before use.
Storage:	4 °C,-20 °C
Storage Comment:	For continuous use, store at 2-8 deg,C for one-two days. For extended storage, store in -20 deg,C freezer. Working dilution samples should be discarded if not used within 12 hours.

Validation report #101202 for Western Blotting (WB)



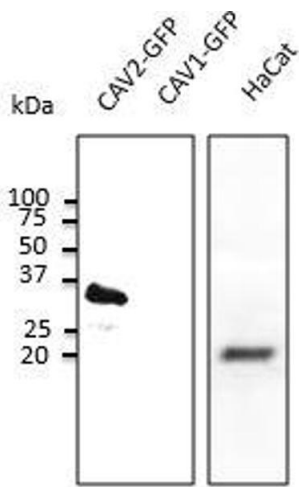
Immunohistochemistry

Image 1.



Immunofluorescence

Image 2. Immunofluorescence - anti-CAV2 Ab - Caveolae Marker at 1/100 dilution in NHI/3T3 cells, cells were fixed With methanol and permeabilized with 0.1% saponin,



Western Blotting

Image 3. Anti-CAV2 at 1/1,000 dilution, 50 µg lysate per lane of transfected HEK293 and 100 µg of HaCat cell line, rabbit polyclonal to goat IgG (HRP) at 1/10,000 dilution,

Please check the [product details page](#) for more images. Overall 5 images are available for ABIN6254169.