



[Go to Product page](#)

Datasheet for ABIN6254173
anti-Separase antibody

1 Image

Overview

| | |
|--------------|---|
| Quantity: | 800 µg |
| Target: | Separase (ESPL1) |
| Reactivity: | Mouse |
| Host: | Goat |
| Clonality: | Polyclonal |
| Conjugate: | This Separase antibody is un-conjugated |
| Application: | Western Blotting (WB) |

Product Details

| | |
|---------------|--|
| Immunogen: | Purified full recombinant protein produced in E. coli. |
| Isotype: | IgG |
| Specificity: | Detects the recombinant protein Esp1 by Western blot. |
| Purification: | epitope affinity purified |

Target Details

| | |
|-------------------|---|
| Target: | Separase (ESPL1) |
| Alternative Name: | Esp1 (ESPL1 Products) |

Application Details

| | |
|--------------------|--|
| Application Notes: | Optimal working dilution should be determined by the investigator. |
|--------------------|--|

Application Details

Restrictions: For Research Use only

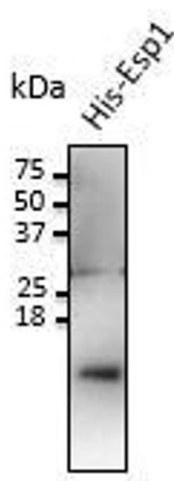
Handling

Handling Advice: The antibody solution should be gently mixed before use.

Storage: 4 °C, -20 °C

Storage Comment: For continuous use, store at 2-8 deg,C for one-two days. For extended storage, store in -20 deg,C freezer. Working dilution samples should be discarded if not used within 12 hours.

Images



Western Blotting

Image 1. Anti-Espl Ab at 1/1,000 dilution, 20 ng of recombinant protein per lane, rabbit polyclonal to goat IgG (HRP) at 1/10,000 dilution,