

Datasheet for ABIN6254177

**anti-IL-10 antibody**[Go to Product page](#)

## 4 Images

## Overview

Quantity:	300 µg
Target:	IL-10 (IL10)
Reactivity:	Human, Mouse, Rat, Cow, Rabbit, Horse, Pig, Dog, Monkey, Chicken, Sheep, Goat, Avian, Cat, Donkey, Guinea Pig, Hamster
Host:	Goat
Clonality:	Polyclonal
Conjugate:	This IL-10 antibody is un-conjugated
Application:	Western Blotting (WB)

## Product Details

Immunogen:	Purified recombinant human IL10 produced in E. coli.
Isotype:	IgG
Specificity:	Detects endogenous levels of total IL10 by Western blot in whole cell and tissue lysates.
Characteristics:	Interleukin 10
Purification:	epitope affinity purified

## Target Details

Target:	IL-10 (IL10)
Alternative Name:	IL10 ( <a href="#">IL10 Products</a> )
Pathways:	<a href="#">Cellular Response to Molecule of Bacterial Origin</a> , <a href="#">Regulation of Leukocyte Mediated Immunity</a> ,

## Target Details

Production of Molecular Mediator of Immune Response, Maintenance of Protein Location, Cancer Immune Checkpoints

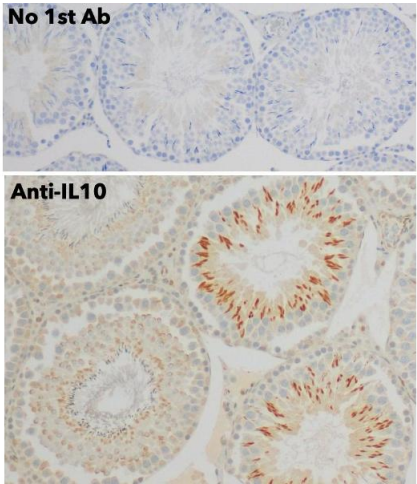
## Application Details

Application Notes:	Optimal working dilution should be determined by the investigator.
Restrictions:	For Research Use only

## Handling

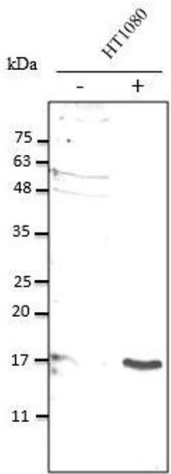
Handling Advice:	The antibody solution should be gently mixed before use.
Storage:	4 °C,-20 °C
Storage Comment:	For continuous use, store at 2-8 deg,C for one-two days. For extended storage, store in -20 deg,C freezer. Working dilution samples should be discarded if not used within 12 hours.

## Images



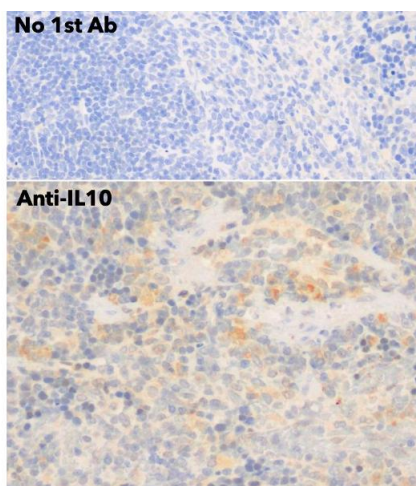
### Immunohistochemistry

Image 1.



### Western Blotting

Image 2. Anti-IL10 Ab at 1/2,500 dilution, 50 µg of total protein lysate per lane, cells were stimulated with E. Coli, rabbit polyclonal to goat IgG (HRP) at 1/10,000 dilution,



#### Immunohistochemistry

##### Image 3.

Please check the [product details page](#) for more images. Overall 4 images are available for ABIN6254177.