

Datasheet for ABIN6254178
anti-Lamin A/C antibody (C-Term)

4 Images

[Go to Product page](#)

Overview

Quantity:	300 µg
Target:	Lamin A/C (LMNA)
Binding Specificity:	C-Term
Reactivity:	Human, Mouse, Rat, Cow, Pig, Dog, Monkey, Rabbit, Horse, Hamster, Sheep, Guinea Pig, Chicken, Avian, Cat, Donkey, Goat
Host:	Goat
Clonality:	Polyclonal
Conjugate:	This Lamin A/C antibody is un-conjugated
Application:	Western Blotting (WB)

Product Details

Immunogen:	Purified recombinant peptide within residues 620 aa to C-term of human LMNA produced in E. coli.
Isotype:	IgG
Specificity:	Detects a band of 65-70 kDa by Western blot in whole cell lysates.
Characteristics:	Lamin A/C
Purification:	epitope affinity purified

Target Details

Target:	Lamin A/C (LMNA)
---------	------------------

Target Details

Alternative Name: LMNA ([LMNA Products](#))

Pathways: [Apoptosis](#), [Caspase Cascade in Apoptosis](#), [ER-Nucleus Signaling](#), [Protein targeting to Nucleus](#)

Application Details

Application Notes: Optimal working dilution should be determined by the investigator.

Restrictions: For Research Use only

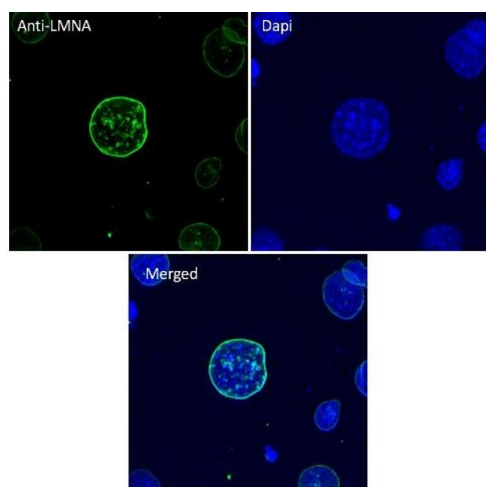
Handling

Handling Advice: The antibody solution should be gently mixed before use.

Storage: 4 °C, -20 °C

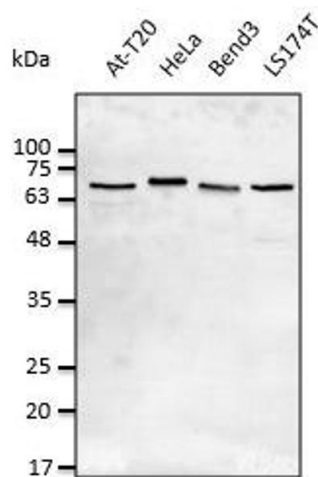
Storage Comment: For continuous use, store at 2-8 deg,C for one-two days. For extended storage, store in -20 deg,C freezer. Working dilution samples should be discarded if not used within 12 hours.

Validation report #101202 for Western Blotting (WB)



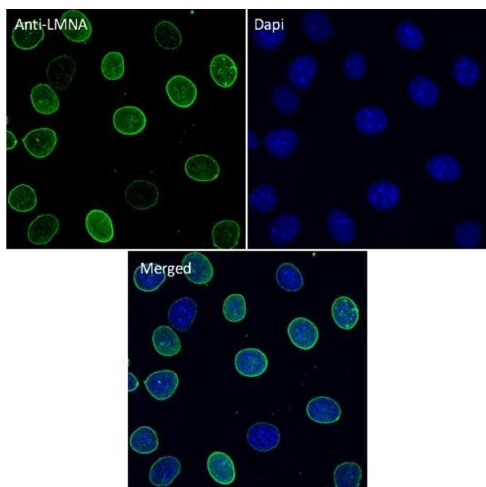
Immunofluorescence

Image 1.



Western Blotting

Image 2. Anti-LMNA Ab at 1/2,500 dilution, lysates at 50 µg per lane, rabbit polyclonal to goat IgG (HRP) at 1/10,000 dilution,



Immunofluorescence

Image 3.

Please check the [product details page](#) for more images. Overall 4 images are available for ABIN6254178.