



[Go to Product page](#)

Datasheet for ABIN6254184
anti-RAB11A antibody (C-Term)

3 Images

Overview

Quantity:	600 µg
Target:	RAB11A
Binding Specificity:	C-Term
Reactivity:	Human, Mouse, Rat, Cow, Horse, Rabbit, Dog, Guinea Pig, Sheep, Monkey, Pig, Hamster, Chicken, Cat, Donkey, Goat, Avian
Host:	Goat
Clonality:	Polyclonal
Conjugate:	This RAB11A antibody is un-conjugated
Application:	Western Blotting (WB), Immunofluorescence (IF)

Product Details

Immunogen:	Purified recombinant peptide derived from within residues 110 aa to the C-terminus of mouse Rab11a produced in E. coli.
Isotype:	IgG
Specificity:	Detects a band of 24 kDa by Western blot in the following human, rat and mouse whole cell lysates and transfected cells with GFP-Rab11a cds. This antibody is specific to Rab11a. It does not recognize Rab11b.
Characteristics:	RAB11, member RAS oncogene family
Purification:	epitope affinity purified

Target Details

Target:	RAB11A
Alternative Name:	Rab11a (RAB11A Products)
Pathways:	Regulation of Cell Size , Thromboxane A2 Receptor Signaling , Regulation of long-term Neuronal Synaptic Plasticity

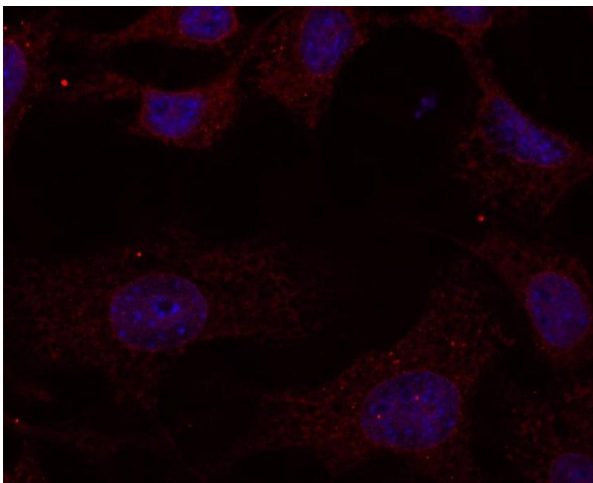
Application Details

Application Notes:	Optimal working dilution should be determined by the investigator.
Restrictions:	For Research Use only

Handling

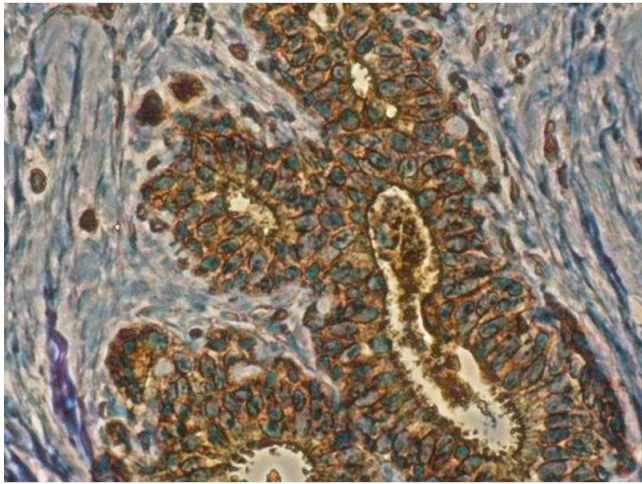
Handling Advice:	The antibody solution should be gently mixed before use.
Storage:	4 °C,-20 °C
Storage Comment:	For continuous use, store at 2-8 deg,C for one-two days. For extended storage, store in -20 deg,C freezer. Working dilution samples should be discarded if not used within 12 hours.

Images



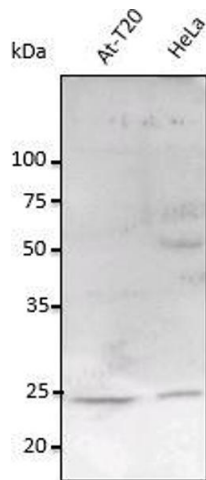
Immunofluorescence

Image 1. Immunofluorescence - anti-Rab11a Ab at 1/100 dilution in NHI/3T3 cells, cells were fixed with methanol and permeabilized with 0.1% saponin,



Immunohistochemistry

Image 2. Anti-Rab11a antibody IHC Staining of human mammary tissue, Immunohistochemistry of formalin-fixed, paraffin-embedded tissue after heat-induced antigen retrieval, antibody concentration 1/200,



Western Blotting

Image 3. Anti-Rab11a Ab at 1/2,500 dilution, lysates at 100 µg per lane, rabbit polyclonal to goat IgG(HRP) at 1/10,000 dilution,