

Datasheet for ABIN6254185  
**anti-RAB15 antibody (C-Term)**[Go to Product page](#)

## 1 Image

## Overview

Quantity:	800 µg
Target:	RAB15
Binding Specificity:	C-Term
Reactivity:	Human, Mouse, Rat, Dog, Horse, Cow, Rabbit, Guinea Pig, Pig, Avian, Cat, Chicken, Donkey, Goat, Hamster, Monkey, Sheep
Host:	Goat
Clonality:	Polyclonal
Conjugate:	This RAB15 antibody is un-conjugated
Application:	Western Blotting (WB)

## Product Details

Immunogen:	Purified recombinant peptide derived from within residues 115 aa to the C-terminus of mouse Rab15 produced in E. coli.
Isotype:	IgG
Specificity:	In transfected cells detects Rab15 by Western blot.
Characteristics:	RAB15, member RAS oncogene family
Purification:	epitope affinity purified

## Target Details

Target:	RAB15
---------	-------

## Target Details

Alternative Name: Rab15 ([RAB15 Products](#))

## Application Details

Application Notes: Optimal working dilution should be determined by the investigator.

Restrictions: For Research Use only

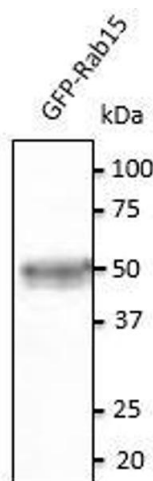
## Handling

Handling Advice: The antibody solution should be gently mixed before use.

Storage: 4 °C, -20 °C

Storage Comment: For continuous use, store at 2-8 deg,C for one-two days. For extended storage, store in -20 deg,C freezer. Working dilution samples should be discarded if not used within 12 hours.

## Images



### Western Blotting

**Image 1.** Anti-Rab15 Ab at 1/500 dilution, 293HEK transfected With GFP- Rab15, lysates at 20 µg per lane, rabbit polyclonal to goat IgG(HRP) at 1/10,000 dilution,