

Datasheet for ABIN6254186
anti-RAB1B antibody (C-Term)

5 Images

[Go to Product page](#)

Overview

Quantity:	300 µg
Target:	RAB1B
Binding Specificity:	C-Term
Reactivity:	Human, Rat, Mouse, Cow, Guinea Pig, Horse, Dog, Monkey, Pig, Hamster, Cat, Chicken, Donkey, Goat, Rabbit, Sheep, Avian
Host:	Goat
Clonality:	Polyclonal
Conjugate:	This RAB1B antibody is un-conjugated
Application:	Western Blotting (WB)

Product Details

Immunogen:	Purified recombinant peptide derived from within residues 110 aa to the C-terminus of Rab1b produced in E. coli.
Isotype:	IgG
Specificity:	Detects endogenous levels of Rab1b protein by Western blot in whole cell lysates and transfected cells with GFP-Rab1b cds.
Characteristics:	RAB1, member RAS oncogene family
Purification:	epitope affinity purified

Target Details

Target:	RAB1B
---------	-------

Target Details

Alternative Name: Rab1b ([RAB1B Products](#))

Application Details

Application Notes: Optimal working dilution should be determined by the investigator.

Restrictions: For Research Use only

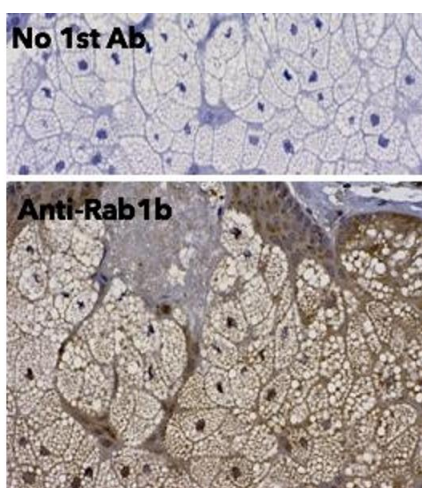
Handling

Handling Advice: The antibody solution should be gently mixed before use.

Storage: 4 °C, -20 °C

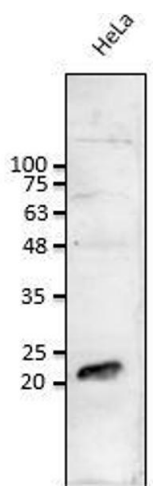
Storage Comment: For continuous use, store at 2-8 deg,C for one-two days. For extended storage, store in -20 deg,C freezer. Working dilution samples should be discarded if not used within 12 hours.

Validation report #101202 for Western Blotting (WB)



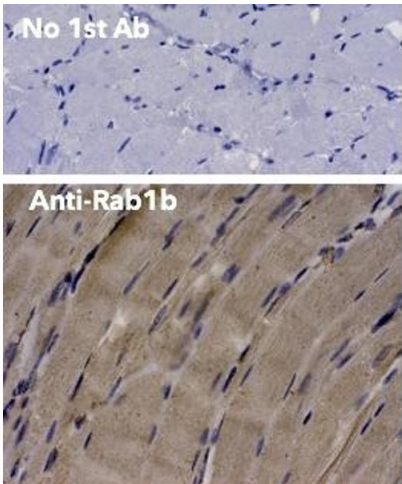
Immunohistochemistry

Image 1.



Western Blotting

Image 2. Anti-Rab1b Ab at 1/1,000 dilution: lysates at 50 µg per lane, rabbit polyclonal to goat (HRP) at 1/10,000 dilution,



Immunohistochemistry

Image 3.

Please check the [product details page](#) for more images. Overall 5 images are available for ABIN6254186.