

Datasheet for ABIN6254189
anti-RAB2B antibody (C-Term)[Go to Product page](#)

1 Image

Overview

Quantity:	600 µg
Target:	RAB2B
Binding Specificity:	C-Term
Reactivity:	Human, Mouse, Rat, Dog, Rabbit, Pig, Horse, Guinea Pig, Cow, Goat, Monkey, Hamster, Avian, Cat, Chicken, Donkey, Sheep
Host:	Goat
Clonality:	Polyclonal
Conjugate:	This RAB2B antibody is un-conjugated
Application:	Western Blotting (WB)

Product Details

Immunogen:	Purified recombinant peptide derived from within residues 110 aa to the C-terminus of mouse Rab2b produced in E. coli.
Isotype:	IgG
Specificity:	Detects levels of Rab2b protein in transfected cells with GFP-Rab2b by Western blot. This antibody is specific for Rab2b and it barely detects Rab2a.
Characteristics:	RAB2b, member RAS oncogene family
Purification:	epitope affinity purified

Target Details

Target:	RAB2B
---------	-------

Target Details

Alternative Name: Rab2b ([RAB2B Products](#))

Application Details

Application Notes: Optimal working dilution should be determined by the investigator.

Restrictions: For Research Use only

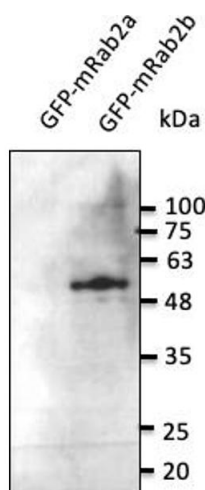
Handling

Handling Advice: The antibody solution should be gently mixed before use.

Storage: 4 °C, -20 °C

Storage Comment: For continuous use, store at 2-8 deg,C for one-two days. For extended storage, store in -20 deg,C freezer. Working dilution samples should be discarded if not used within 12 hours.

Images



Western Blotting

Image 1.