



[Go to Product page](#)

Datasheet for ABIN6254201
anti-C-Peptide antibody

1 Image

Overview

Quantity:	800 µg
Target:	C-Peptide
Reactivity:	Human, Rat
Host:	Goat
Clonality:	Polyclonal
Conjugate:	This C-Peptide antibody is un-conjugated
Application:	Western Blotting (WB)

Product Details

Immunogen:	Purified recombinant human and rat C-peptides produced in E. coli as a fusion protein.
Sequence:	EAEDLQVGQV ELGGPGAGS LQPLALEGSL QGT-EVEDPQVAQL ELGGPGAGD LQTLALEVAR Q
Isotype:	IgG
Specificity:	Detects C-peptide using MBP-C-peptide recombinant fusion protein and GFP-C-peptide expressed in transfected mammalian cells.
Characteristics:	pro-insulin
Purification:	This antibody is epitope-affinity purified from goat antiserum.

Target Details

Target:	C-Peptide
Abstract:	C-Peptide Products

Target Details

Background: C-Peptide is part of proinsulin, that consists of C-Peptide, alpha and beta chains that later become linked together to form the insulin molecule. Each proinsulin molecule produces one molecule of insulin and one molecule of C-peptide that is released into the blood. C-peptide stimulates the N⁺, K⁺ -ATPase and endothelial nitric oxide synthase activities by binding to cell membranes which leads to increased intracellular Ca²⁺ concentration.

Gene ID: 3630

Application Details

Application Notes: WB 1:500-1:2,000

Restrictions: For Research Use only

Handling

Concentration: 4.00 mg/mL

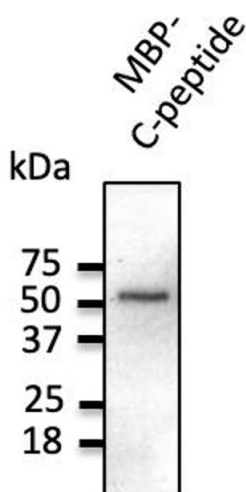
Buffer: Polyclonal antibody supplied as a 200 µl (4 mg/ml) aliquot in PBS, 20% glycerol and 0.05% sodium azide.

Handling Advice: The antibody solution should be gently mixed before use.

Storage: 4 °C, -20 °C

Storage Comment: For continuous use, store at 2-8 deg,C for one-two days. For extended storage, store in -20 deg,C freezer. Working dilution samples should be discarded if not used within 12 hours.

Images



Western Blotting

Image 1.