

Datasheet for ABIN6254206

**anti-STUB1 antibody**

5 Images

[Go to Product page](#)

## Overview

Quantity:	300 µg
Target:	STUB1
Reactivity:	Human, Mouse, Rat, Cow, Guinea Pig, Dog, Pig, Horse, Monkey, Chicken, Hamster, Avian, Cat, Donkey, Goat, Rabbit, Sheep
Host:	Goat
Clonality:	Polyclonal
Conjugate:	This STUB1 antibody is un-conjugated
Application:	Western Blotting (WB)

## Product Details

Immunogen:	Purified recombinant human STUB1 protein produced in E. coli.
Isotype:	IgG
Specificity:	Detects endogenous levels of STUB1 by Western blot.
Characteristics:	STIP1 homology and U-box containing protein 1, E3 ubiquitin protein ligase
Purification:	epitope affinity purified

## Target Details

Target:	STUB1
Alternative Name:	STUB1 ( <a href="#">STUB1 Products</a> )
Pathways:	<a href="#">Regulation of Hormone Metabolic Process</a> , <a href="#">Response to Water Deprivation</a>

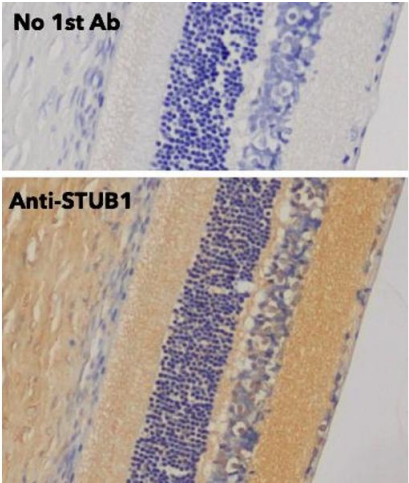
## Application Details

Application Notes:	Optimal working dilution should be determined by the investigator.
Restrictions:	For Research Use only

## Handling

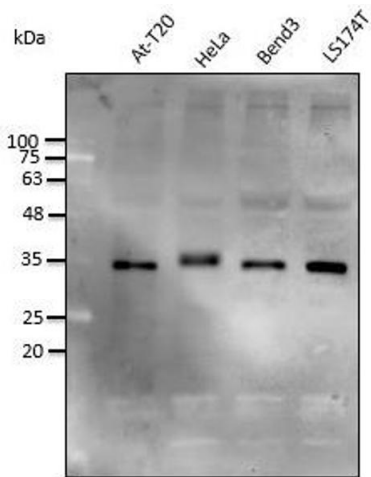
Handling Advice:	The antibody solution should be gently mixed before use.
Storage:	4 °C,-20 °C
Storage Comment:	For continuous use, store at 2-8 deg,C for one-two days. For extended storage, store in -20 deg,C freezer. Working dilution samples should be discarded if not used within 12 hours.

## Images



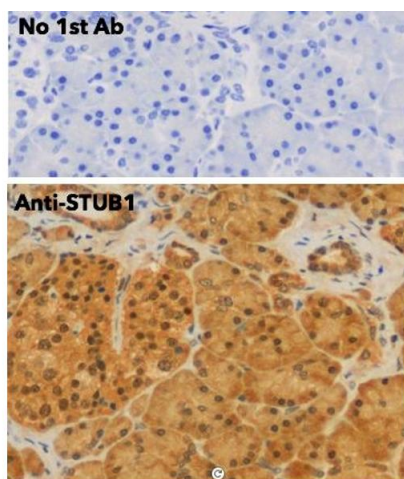
### Immunohistochemistry

**Image 1.**



### Western Blotting

**Image 2.** Anti-STUB1 Ab at 1/2,500 dilution, lysates at 50 µg per lane, rabbit polyclonal to goat IgG (HRP) at 1/10,000 dilution,



#### Immunohistochemistry

Image 3.

Please check the [product details page](#) for more images. Overall 5 images are available for ABIN6254206.