

Datasheet for ABIN6254216
anti-SNCG antibody (C-Term)[Go to Product page](#)

1 Image

Overview

Quantity:	300 µg
Target:	SNCG
Binding Specificity:	C-Term
Reactivity:	Human, Rat, Mouse, Monkey, Cat, Horse, Chicken, Pig, Cow, Rabbit, Dog, Sheep, Donkey, Goat, Guinea Pig, Avian, Hamster
Host:	Goat
Clonality:	Polyclonal
Conjugate:	This SNCG antibody is un-conjugated
Application:	Western Blotting (WB)

Product Details

Immunogen:	Purified recombinant peptide derived from within residues 80 aa to the C-terminus of human SNCG produced in E. coli.
Isotype:	IgG
Specificity:	Detects endogenous levels of SNCG by Western blot. This Ab is specific for SNCG and does not recognizes SNCA and SNCB proteins.
Characteristics:	Synuclein gamma
Purification:	epitope affinity purified

Target Details

Target:	SNCG
---------	------

Target Details

Alternative Name: SNCG ([SNCG Products](#))

Application Details

Application Notes: Optimal working dilution should be determined by the investigator.

Restrictions: For Research Use only

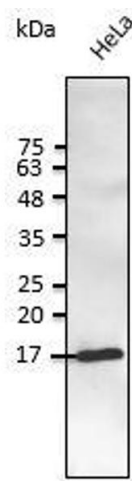
Handling

Handling Advice: The antibody solution should be gently mixed before use.

Storage: 4 °C, -20 °C

Storage Comment: For continuous use, store at 2-8 deg,C for one-two days. For extended storage, store in -20 deg,C freezer. Working dilution samples should be discarded if not used within 12 hours.

Images



Western Blotting

Image 1. Anti-SNCG Ab at 1/2,500 dilution, lysate at 50 µg per lane, rabbit polyclonal to goat IgG (HRP) at 1/10,000 dilution,