

Datasheet for ABIN6254221
anti-CHM antibody (C-Term)[Go to Product page](#)

4 Images

Overview

Quantity:	800 µg
Target:	CHM
Binding Specificity:	C-Term
Reactivity:	Human, Rat, Mouse, Horse, Sheep, Rabbit, Pig, Monkey, Hamster, Guinea Pig, Goat, Donkey, Dog, Cow, Chicken, Cat, Avian
Host:	Goat
Clonality:	Polyclonal
Conjugate:	This CHM antibody is un-conjugated
Application:	Western Blotting (WB)

Product Details

Immunogen:	Purified recombinant peptide derived from within residues 617 aa - stop at the C-terminus of human Rep1 produced in E. coli.
Isotype:	IgG
Specificity:	Detects endogenous Rep1 and in transfected cells by Western blot.
Characteristics:	Choroideremia (Rab escort protein 1)
Purification:	epitope affinity purified

Target Details

Target:	CHM
---------	-----

Target Details

Alternative Name:	REP1 (CHM Products)
Pathways:	Sensory Perception of Sound

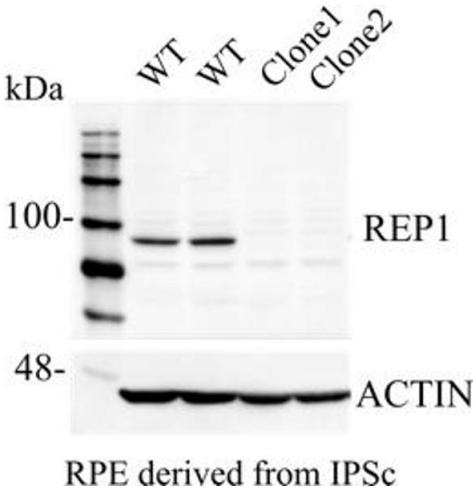
Application Details

Application Notes:	Optimal working dilution should be determined by the investigator.
Restrictions:	For Research Use only

Handling

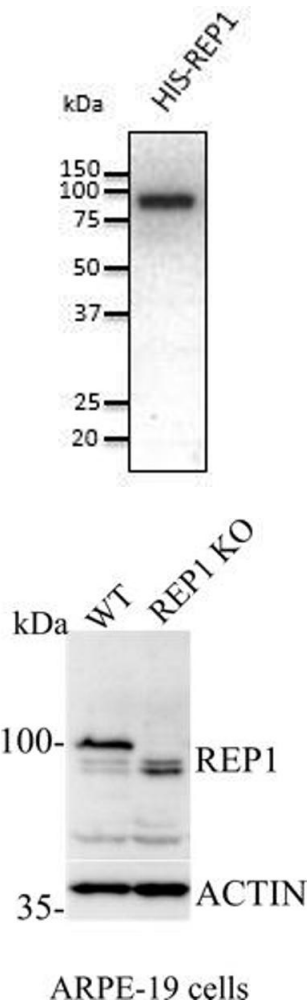
Handling Advice:	The antibody solution should be gently mixed before use.
Storage:	4 °C,-20 °C
Storage Comment:	For continuous use, store at 2-8 deg,C for one-two days. For extended storage, store in -20 deg,C freezer. Working dilution samples should be discarded if not used within 12 hours.

Images



Western Blotting

Image 1.



Western Blotting

Image 2. Anti-REP1 Ab at 1/1,000 dilution, 50 ng of recombinant protein per lane, rabbit polyclonal to goat IgG (HRP) at 1/10,000 dilution

Western Blotting

Image 3.

Please check the [product details page](#) for more images. Overall 4 images are available for ABIN6254221.