

Datasheet for ABIN6254223
anti-TUBA4A antibody (N-Term)[Go to Product page](#)

1 Image

Overview

Quantity:	600 µg
Target:	TUBA4A
Binding Specificity:	N-Term
Reactivity:	Human, Mouse, Rat, Cow, Dog, Guinea Pig, Monkey, Sheep, Rabbit, Pig, Horse, Chicken, Hamster, Goat, Donkey, Cat, Avian
Host:	Goat
Clonality:	Polyclonal
Conjugate:	This TUBA4A antibody is un-conjugated
Application:	Western Blotting (WB)

Product Details

Immunogen:	Purified recombinant peptide derived from within residues 80 aa to the N-terminus of human alpha tubulin produced in E. coli.
Isotype:	IgG
Specificity:	This antibody gives a positive signal in the following human (HeLa), rat (NRK), mouse (AtT-20), dog (MDCK) whole cell lysates.
Characteristics:	Tubulin, alpha 4a
Purification:	epitope affinity purified

Target Details

Target:	TUBA4A
---------	--------

Target Details

Alternative Name:	TUBA4A (TUBA4A Products)
Pathways:	Microtubule Dynamics, M Phase

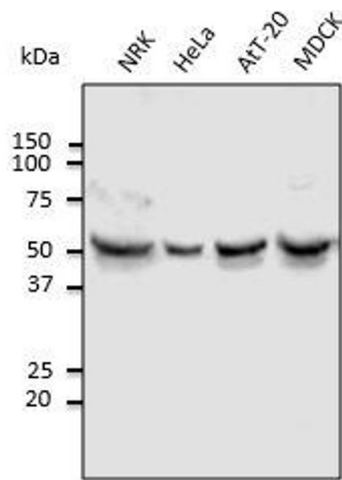
Application Details

Application Notes:	Optimal working dilution should be determined by the investigator.
Restrictions:	For Research Use only

Handling

Handling Advice:	The antibody solution should be gently mixed before use.
Storage:	4 °C,-20 °C
Storage Comment:	For continuous use, store at 2-8 deg,C for one-two days. For extended storage, store in -20 deg,C freezer. Working dilution samples should be discarded if not used within 12 hours.

Images



Western Blotting

Image 1. Anti-Tubulin alpha4A Ab at 1,000 dilution, lysates at 100 µg per lane, Rabbit polyclonal to goat IgG (HRP) at 1/10,000 dilution.