



Datasheet for ABIN6254224

anti-beta Catenin antibody (C-Term)



[Go to Product page](#)

8 Images

1 Publication

Overview

Quantity:	600 µg
Target:	beta Catenin (CATNB)
Binding Specificity:	C-Term
Reactivity:	Human, Mouse, Rat, Chicken, Cow, Dog, Pig, Rabbit, Sheep, Monkey, Hamster, Avian, Cat, Donkey, Goat, Guinea Pig, Horse
Host:	Goat
Clonality:	Polyclonal
Conjugate:	This beta Catenin antibody is un-conjugated
Application:	Western Blotting (WB), Immunofluorescence (IF)

Product Details

Immunogen:	Purified recombinant peptide derived from within residues 731 aa to the C-terminus of human beta Catenin produced in E. coli.
Isotype:	IgG
Specificity:	Detects a band of approximately 95 kDa by Western blot in MNT1 and SH-SY5Y cell lysates.
Characteristics:	Catenin (cadherin-associated protein), beta 1, 88 kDa
Purification:	epitope affinity purified

Target Details

Target:	beta Catenin (CATNB)
---------	----------------------

Target Details

Alternative Name: beta-Catenin ([CATNB Products](#))

Pathways: [Peptide Hormone Metabolism](#)

Application Details

Application Notes: Optimal working dilution should be determined by the investigator.

Restrictions: For Research Use only

Handling

Handling Advice: The antibody solution should be gently mixed before use.

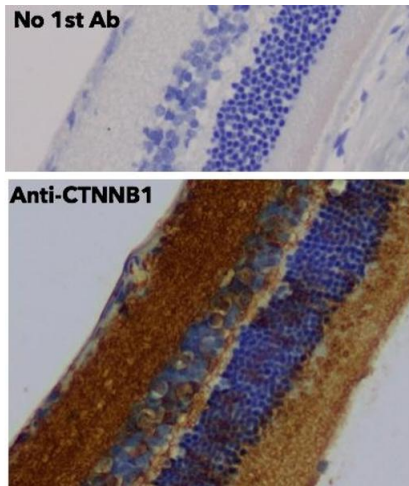
Storage: 4 °C,-20 °C

Storage Comment: For continuous use, store at 2-8 deg,C for one-two days. For extended storage, store in -20 deg,C freezer. Working dilution samples should be discarded if not used within 12 hours.

Publications

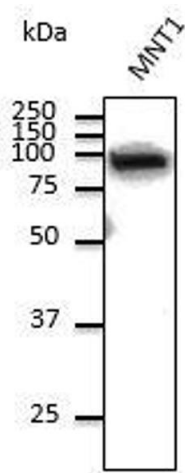
Product cited in: Wu, Zhu, Yin, Kang, Cao, Tian, Zhang, Lu, Liu: "Traditional Chinese Medicine CFF-1 induced cell growth inhibition, autophagy, and apoptosis via inhibiting EGFR-related pathways in prostate cancer." in: **Cancer medicine**, Vol. 7, Issue 4, pp. 1546-1559, (2018) ([PubMed](#)).

Wu, Zhu, Zhang, Yin, Kang, Cao, Tian, Lu, Liu: "EGFR-associated pathways involved in traditional Chinese medicine (TCM)-1-induced cell growth inhibition, autophagy and apoptosis in prostate cancer." in: **Molecular medicine reports**, Vol. 17, Issue 6, pp. 7875-7885, (2018) ([PubMed](#)).



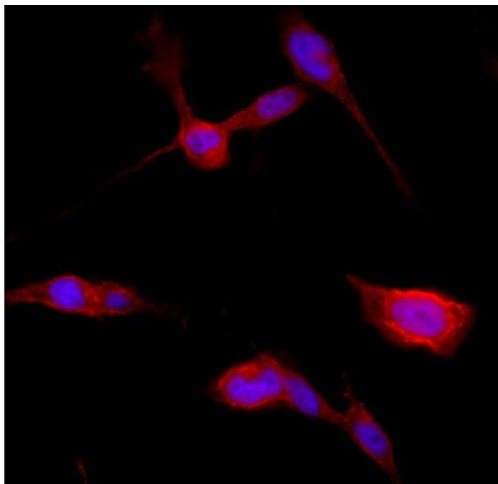
Immunohistochemistry

Image 1.



Western Blotting

Image 2. Anti-beta-Catenin Ab at 1/1,000 dilution, lysate at 100 µg per lane, Rabbit polyclonal to goat IgG (HRP) at 1/10,000 dilution,



Immunofluorescence

Image 3. Confocal immunofluorescence - anti-Catenin beta1 Ab in BEAS-2B cells at 1/250 dilution, cells were fixed with 4% of PFA,

Please check the [product details page](#) for more images. Overall 8 images are available for ABIN6254224.