



[Go to Product page](#)

Datasheet for ABIN6254229
anti-Luciferase antibody (C-Term)

1 Image

Overview

Quantity:	600 µg
Target:	Luciferase
Binding Specificity:	C-Term
Reactivity:	Photinus pyralis
Host:	Goat
Clonality:	Polyclonal
Conjugate:	This Luciferase antibody is un-conjugated
Application:	Western Blotting (WB)

Product Details

Immunogen:	Purified recombinant peptide derived from within residues 340 aa to the C-terminus of Luciferase produced in E. coli.
Isotype:	IgG
Specificity:	In 293HEK cells transfected with cds plasmid detects a band of 62 kDa by Western blot.
Characteristics:	Firefly Luciferase
Purification:	epitope affinity purified

Target Details

Target:	Luciferase
Abstract:	Luciferase Products

Application Details

Application Notes: Optimal working dilution should be determined by the investigator.

Restrictions: For Research Use only

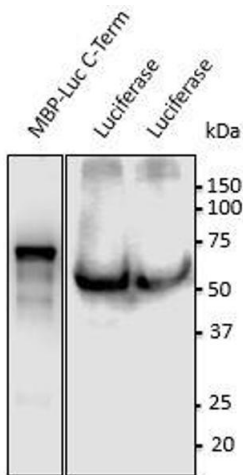
Handling

Handling Advice: The antibody solution should be gently mixed before use.

Storage: 4 °C,-20 °C

Storage Comment: For continuous use, store at 2-8 deg,C for one-two days. For extended storage, store in -20 deg,C freezer. Working dilution samples should be discarded if not used within 12 hours.

Images



Western Blotting

Image 1. Anti-Luciferase Ab at 1/500 dilution, 293HEK transduced with lentivirus expressing luciferase, lysates at 100 µg per lane, rabbit polyclonal to goat IgG (HRP) at 1/10,000 dilution,