

Datasheet for ABIN6254235

anti-Pepsin antibody[Go to Product page](#)**1** Image

Overview

Quantity:	600 µg
Target:	Pepsin
Reactivity:	Human, Pig, Dog, Rabbit, Donkey, Rat, Goat, Sheep, Guinea Pig, Hamster, Cat, Horse, Chicken, Monkey, Cow, Mouse, Avian
Host:	Goat
Clonality:	Polyclonal
Conjugate:	This Pepsin antibody is un-conjugated
Application:	Western Blotting (WB)

Product Details

Immunogen:	Purified full length native protein isolated from stomach
Isotype:	IgG
Specificity:	Using pepsin protein gives a positive signal by Western blot.
Characteristics:	pepsinogen A
Purification:	epitope affinity purified

Target Details

Target:	Pepsin
Abstract:	Pepsin Products

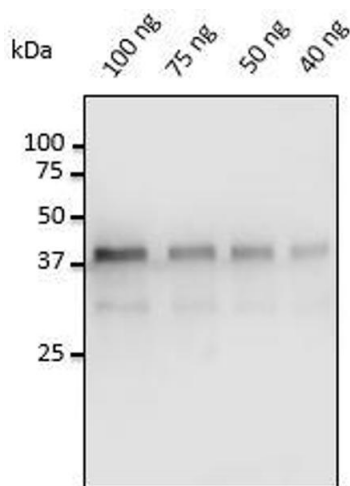
Application Details

Application Notes:	Optimal working dilution should be determined by the investigator.
Restrictions:	For Research Use only

Handling

Handling Advice:	The antibody solution should be gently mixed before use.
Storage:	4 °C,-20 °C
Storage Comment:	For continuous use, store at 2-8 deg,C for one-two days. For extended storage, store in -20 deg,C freezer. Working dilution samples should be discarded if not used within 12 hours.

Images



Western Blotting

Image 1. Anti-Pepsin Ab at 1/500 dilution, 40-100 ng of Pepsin isolated from porcine gastric mucosa, rabbit polyclonal to goat IgG (HRP) at 1/10,000 dilution,