



[Go to Product page](#)

Datasheet for ABIN6254238  
**anti-RAB10 antibody (C-Term)**

1 Image

### Overview

Quantity:	600 µg
Target:	RAB10
Binding Specificity:	C-Term
Reactivity:	Human, Mouse, Rat, Sheep, Cow, Dog, Guinea Pig, Horse, Rabbit, Monkey, Pig, Chicken, Avian, Cat, Donkey, Goat, Hamster
Host:	Goat
Clonality:	Polyclonal
Conjugate:	This RAB10 antibody is un-conjugated
Application:	Western Blotting (WB)

### Product Details

Immunogen:	Purified recombinant peptide derived from within residues 100 aa to the C-terminus of mouse Rab10 produced in E. coli.
Isotype:	IgG
Specificity:	Detects Rab10 by Western blot in transfected cells with GFP-Rab10.
Characteristics:	RAB10, member RAS oncogene family
Purification:	epitope affinity purified

### Target Details

Target:	RAB10
---------	-------

## Target Details

Alternative Name: Rab10 ([RAB10 Products](#))

Pathways: [Asymmetric Protein Localization](#), [SARS-CoV-2 Protein Interactome](#)

## Application Details

Application Notes: Optimal working dilution should be determined by the investigator.

Restrictions: For Research Use only

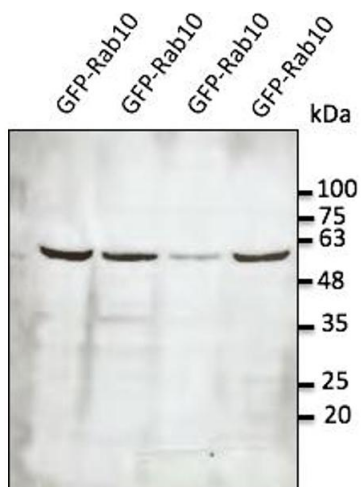
## Handling

Handling Advice: The antibody solution should be gently mixed before use.

Storage: 4 °C, -20 °C

Storage Comment: For continuous use, store at 2-8 deg,C for one-two days. For extended storage, store in -20 deg,C freezer. Working dilution samples should be discarded if not used within 12 hours.

## Images



### Western Blotting

Image 1.