

Datasheet for ABIN6254239
anti-RAB35 antibody (C-Term)[Go to Product page](#)

1 Image

Overview

Quantity:	600 µg
Target:	RAB35
Binding Specificity:	C-Term
Reactivity:	Human, Mouse, Rat, Cow, Rabbit, Guinea Pig, Horse, Dog, Monkey, Pig, Chicken, Avian, Cat, Donkey, Goat, Hamster, Sheep
Host:	Goat
Clonality:	Polyclonal
Conjugate:	This RAB35 antibody is un-conjugated
Application:	Western Blotting (WB)

Product Details

Immunogen:	Purified recombinant peptide derived from within residues 110 aa to the C-terminus of mouse Rab35 produced in E. coli.
Isotype:	IgG
Specificity:	Detects Rab35 by Western blot in transfected cells with GFP-Rab35.
Characteristics:	RA35, member RAS oncogene family
Purification:	epitope affinity purified

Target Details

Target:	RAB35
---------	-------

Target Details

Alternative Name: Rab35 ([RAB35 Products](#))

Application Details

Application Notes: Optimal working dilution should be determined by the investigator.

Restrictions: For Research Use only

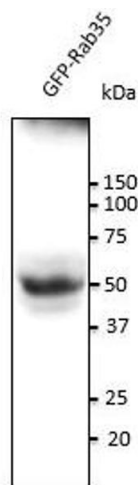
Handling

Handling Advice: The antibody solution should be gently mixed before use.

Storage: 4 °C, -20 °C

Storage Comment: For continuous use, store at 2-8 deg,C for one-two days. For extended storage, store in -20 deg,C freezer. Working dilution samples should be discarded if not used within 12 hours.

Images



Western Blotting

Image 1. Anti-Rab35 Ab at 1/500 dilution, 293HEK transfected With GFP-Rab35, lysates at 100 gg per lane, rabbit polyclonal to goat IgG (HRP) at 1/10,000 dilution,