



[Go to Product page](#)

Datasheet for ABIN6254248

## anti-YFP antibody

### 4 Images

#### Overview

Quantity:	300 µg
Target:	YFP
Reactivity:	Please inquire
Host:	Goat
Clonality:	Polyclonal
Conjugate:	This YFP antibody is un-conjugated
Application:	Western Blotting (WB), Immunoelectron Microscopy (IEM), Immunofluorescence (IF), Immunohistochemistry (Frozen Sections) (IHC (fro)), Immunohistochemistry (Paraffin-embedded Sections) (IHC (p))

#### Product Details

Immunogen:	Purified recombinant peptide produced in E. coli.
Isotype:	IgG
Specificity:	In 293HEK cells transfected with cds plasmid detects a band of 27 kDa by Western blot. This antibody also recognizes GFP and does not recognize mCherry/red fluorescent protein.
Cross-Reactivity (Details):	YFP, GFP, EGFP, Venus
Characteristics:	Yellow Fluorescent Protein
Purification:	epitope affinity purified

#### Target Details

Target:	YFP
---------	-----

## Target Details

---

Alternative Name: YFP ([YFP Products](#))

---

Target Type: Synthetic

## Application Details

---

Application Notes: Optimal working dilution should be determined by the investigator.

---

Restrictions: For Research Use only

## Handling

---

Handling Advice: The antibody solution should be gently mixed before use.

---

Storage: 4 °C, -20 °C

---

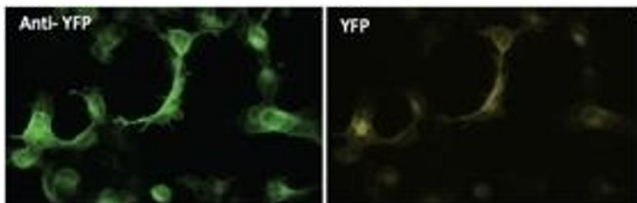
Storage Comment: For continuous use, store at 2-8 deg,C for one-two days. For extended storage, store in -20 deg,C freezer. Working dilution samples should be discarded if not used within 12 hours.

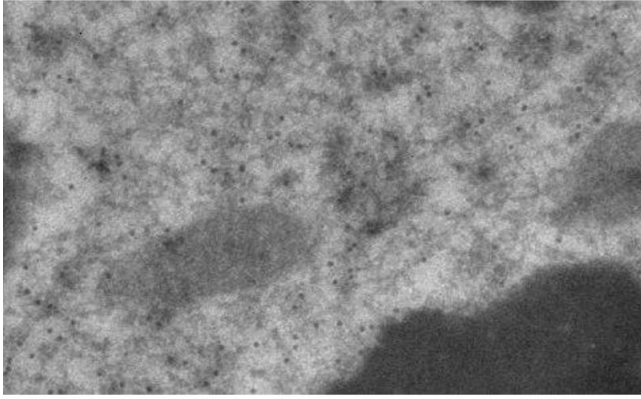
## Images

---

### Immunofluorescence

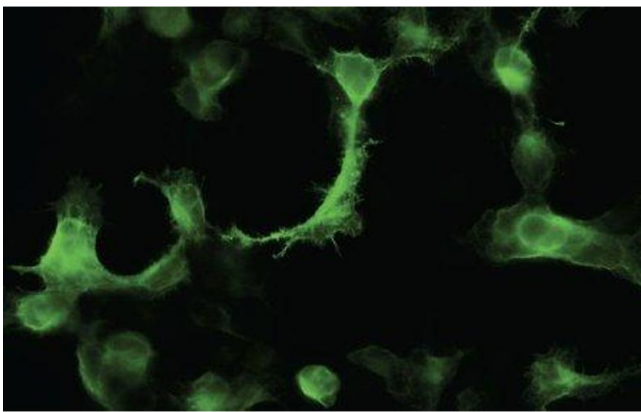
Image 1.





### Immunoelectron Microscopy

**Image 2.** Immunogold labeling of epithelium Cells, in vivo injected with YFP expressing vector,



### Immunofluorescence

**Image 3.** Immunofluorescence - anti-YFP Ab in 293HEK Cells transfected with YFP at 1/50 dilution cells were fixed with 4% of PFA,

Please check the [product details page](#) for more images. Overall 4 images are available for ABIN6254248.