



Datasheet for ABIN6254249

## anti-Beta Lactoglobulin (LGB) antibody



[Go to Product page](#)

### 1 Image

#### Overview

Quantity:	300 µg
Target:	Beta Lactoglobulin (LGB)
Reactivity:	Cow
Host:	Goat
Clonality:	Polyclonal
Conjugate:	Un-conjugated
Application:	Western Blotting (WB)

#### Product Details

Immunogen:	Purified beta-Lactoglobulin from bovine milk (>90% by SDS-PAGE). Contains beta-lactoglobulins A and B.
Isotype:	IgG
Specificity:	Using purified protein and milk extract detects a band of 18.5 kDa by Western blot.
Characteristics:	beta-Lactoglobulin
Purification:	epitope affinity purified

#### Target Details

Target:	Beta Lactoglobulin (LGB)
Alternative Name:	beta-Lactoglobulin ( <a href="#">LGB Products</a> )

## Application Details

Application Notes: Optimal working dilution should be determined by the investigator.

Restrictions: For Research Use only

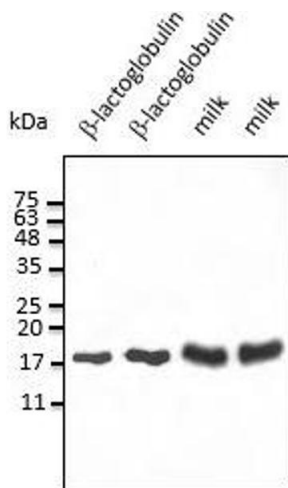
## Handling

Handling Advice: The antibody solution should be gently mixed before use.

Storage: 4 °C, -20 °C

Storage Comment: For continuous use, store at 2-8 deg,C for one-two days. For extended storage, store in -20 deg,C freezer. Working dilution samples should be discarded if not used within 12 hours.

## Images



### Western Blotting

**Image 1.** Anti- $\beta$ -lactoglobulin Ab at 2,500 dilution, 50-75 ng of protein and 50-100  $\mu$ g of dry milk per lane, rabbit polyclonal to goat IgG (HRP) at 1/10,000 dilution,