



[Go to Product page](#)

Datasheet for ABIN6254250

anti-CRE Recombinase (CRE) antibody

1 Image

Overview

Quantity:	600 µg
Target:	CRE Recombinase (CRE)
Reactivity:	Bacteriophage P1
Host:	Goat
Clonality:	Polyclonal
Conjugate:	Un-conjugated
Application:	Western Blotting (WB)

Product Details

Immunogen:	Purified recombinant peptide produced in E. coli.
Isotype:	IgG
Specificity:	In 293HEK cells transduced with Ad-Cre detects a band of 38 kDa by Western blot and gives a positive signal for the Cre recombinase protein.
Characteristics:	Cre Recombinase
Purification:	epitope affinity purified

Target Details

Target:	CRE Recombinase (CRE)
Alternative Name:	Cre (CRE Products)
Target Type:	Phage Protein

Application Details

Application Notes: Optimal working dilution should be determined by the investigator.

Restrictions: For Research Use only

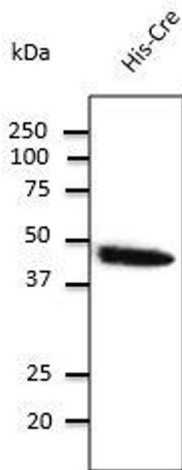
Handling

Handling Advice: The antibody solution should be gently mixed before use.

Storage: 4 °C,-20 °C

Storage Comment: For continuous use, store at 2-8 deg,C for one-two days. For extended storage, store in -20 deg,C freezer. Working dilution samples should be discarded if not used within 12 hours.

Images



Western Blotting

Image 1. Anti-Cre Ab at 2,000 dilution, rabbit polyclonal to goat IgG (HRP) at 1/10,000 dilution,