

Datasheet for ABIN6254910  
**anti-FGF2 antibody (C-Term)**

3 Images

3 Publications

[Go to Product page](#)

## Overview

Quantity:	100 µL
Target:	FGF2
Binding Specificity:	C-Term
Reactivity:	Human, Mouse, Rat
Host:	Rabbit
Clonality:	Polyclonal
Conjugate:	This FGF2 antibody is un-conjugated
Application:	Western Blotting (WB), ELISA, Immunohistochemistry (IHC), Immunocytochemistry (ICC), Immunofluorescence (IF)

## Product Details

Immunogen:	A synthesized peptide derived from human FGF2, corresponding to a region within C-terminal amino acids.
Isotype:	IgG
Specificity:	FGF2 Antibody detects endogenous levels of total FGF2.
Purification:	The antiserum was purified by peptide affinity chromatography using SulfoLink™ Coupling Resin (Thermo Fisher Scientific).

## Target Details

Target:	FGF2
Alternative Name:	FGF2 ( <a href="#">FGF2 Products</a> )

## Target Details

Background:	Description: Acts as a ligand for FGFR1, FGFR2, FGFR3 and FGFR4 (PubMed:8663044). Also acts as an integrin ligand which is required for FGF2 signaling (PubMed:28302677). Binds to integrin ITGAV:ITGB3 (PubMed:28302677). Plays an important role in the regulation of cell survival, cell division, cell differentiation and cell migration (PubMed:8663044, PubMed:28302677). Functions as a potent mitogen in vitro (PubMed:3732516, PubMed:3964259). Can induce angiogenesis (PubMed:23469107, PubMed:28302677). Gene: FGF2
Molecular Weight:	21kDa
Gene ID:	2247
UniProt:	<a href="#">P09038</a>
Pathways:	<a href="#">RTK Signaling</a> , <a href="#">Fc-epsilon Receptor Signaling Pathway</a> , <a href="#">EGFR Signaling Pathway</a> , <a href="#">Neurotrophin Signaling Pathway</a> , <a href="#">C21-Steroid Hormone Metabolic Process</a> , <a href="#">Inositol Metabolic Process</a> , <a href="#">Glycosaminoglycan Metabolic Process</a> , <a href="#">Protein targeting to Nucleus</a> , <a href="#">S100 Proteins</a>

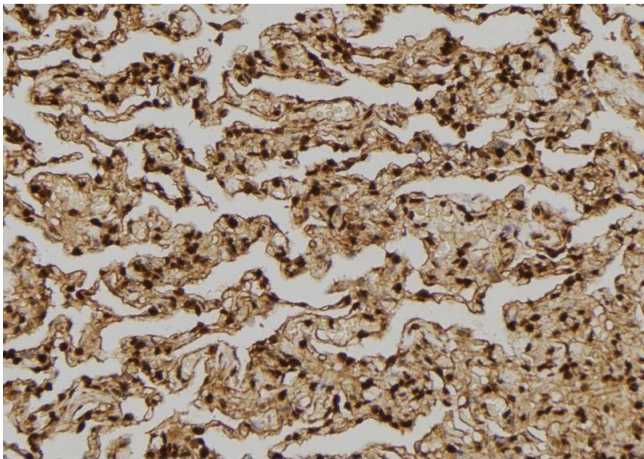
## Application Details

Application Notes:	WB 1:500-1:2000, IHC 1:50-1:200, IF/ICC 1:100-1:500, ELISA(peptide) 1:20000-1:40000
Restrictions:	For Research Use only

## Handling

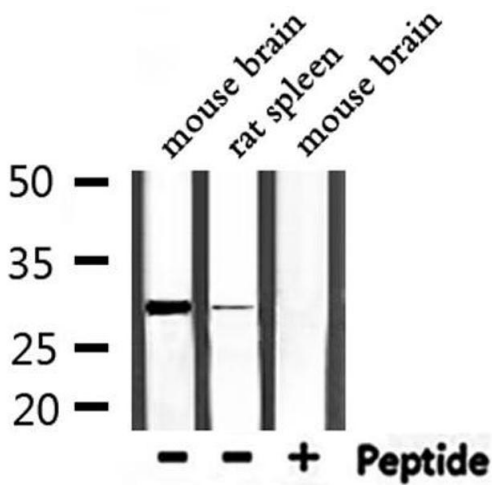
Format:	Liquid
Concentration:	1 mg/mL
Buffer:	Rabbit IgG in phosphate buffered saline , pH 7.4, 150 mM NaCl, 0.02 % sodium azide and 50 % glycerol.
Preservative:	Sodium azide
Precaution of Use:	This product contains Sodium azide: a POISONOUS AND HAZARDOUS SUBSTANCE which should be handled by trained staff only.
Storage:	-20 °C
Storage Comment:	Store at -20 °C. Stable for 12 months from date of receipt.
Expiry Date:	12 months

Product cited in: Liu, Li, Shu, Xiao, Feng: "Ephrin-b3 modulates hippocampal neurogenesis and the reelin signaling pathway in a pilocarpine-induced model of epilepsy." in: **International journal of molecular medicine**, Vol. 41, Issue 6, pp. 3457-3467, (2018) ([PubMed](#)).



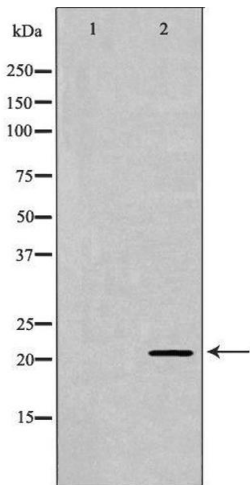
Immunohistochemistry

**Image 1.** ABIN6276314 at 1/100 staining Human lung tissue by IHC-P. The sample was formaldehyde fixed and a heat mediated antigen retrieval step in citrate buffer was performed. The sample was then blocked and incubated with the antibody for 1.5 hours at 22°C. An HRP conjugated goat anti-rabbit antibody was used as the secondary



Western Blotting

**Image 2.** Western blot analysis of extracts from mouse brain, rat spleen, using FGF2 Antibody.



Western Blotting

**Image 3.** Western blot analysis of Mouse liver tissue lysates, using FGF2 Antibody. The lane on the left is treated with the antigen-specific peptide.