

Datasheet for ABIN6254921
anti-CDKN1B antibody (pSer10)[Go to Product page](#)

3 Images

Overview

Quantity:	100 µL
Target:	CDKN1B
Binding Specificity:	pSer10
Reactivity:	Human, Mouse, Rat
Host:	Rabbit
Clonality:	Polyclonal
Conjugate:	This CDKN1B antibody is un-conjugated
Application:	Western Blotting (WB), ELISA, Immunofluorescence (IF), Immunocytochemistry (ICC)

Product Details

Immunogen:	A synthesized peptide derived from human p27 Kip1 around the phosphorylation site of Ser10.
Isotype:	IgG
Specificity:	Phospho-p27 Kip1 (Ser10) Antibody detects endogenous levels of p27 Kip1 only when phosphorylated at Serine 10.
Predicted Reactivity:	Bovine, Sheep, Rabbit, Dog, Chicken
Purification:	The antibody is from purified rabbit serum by affinity purification via sequential chromatography on phospho- and non-phospho-peptide affinity columns.

Target Details

Target:	CDKN1B
---------	--------

Target Details

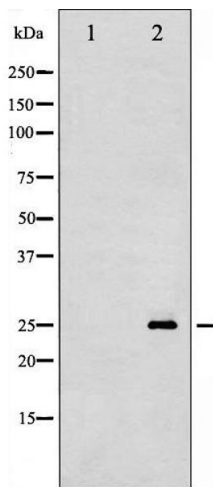
Alternative Name:	CDKN1B (CDKN1B Products)
Background:	<p>Description: Important regulator of cell cycle progression. Inhibits the kinase activity of CDK2 bound to cyclin A, but has little inhibitory activity on CDK2 bound to SPDYA (PubMed:28666995). Involved in G1 arrest. Potent inhibitor of cyclin E- and cyclin A-CDK2 complexes. Forms a complex with cyclin type D-CDK4 complexes and is involved in the assembly, stability, and modulation of CCND1-CDK4 complex activation. Acts either as an inhibitor or an activator of cyclin type D-CDK4 complexes depending on its phosphorylation state and/or stoichiometry.</p> <p>Gene: CDKN1B</p>
Molecular Weight:	27kDa
Gene ID:	1027
UniProt:	P46527
Pathways:	Cell Division Cycle , Fc-epsilon Receptor Signaling Pathway , EGFR Signaling Pathway , Neurotrophin Signaling Pathway , Positive Regulation of Peptide Hormone Secretion , Negative Regulation of Hormone Secretion , Sensory Perception of Sound , Mitotic G1-G1/S Phases , DNA Replication , Positive Regulation of Endopeptidase Activity , Synthesis of DNA , Autophagy

Application Details

Application Notes:	WB 1:500-1:2000, IF/ICC 1:100-1:500, ELISA(peptide) 1:20000-1:40000
Restrictions:	For Research Use only

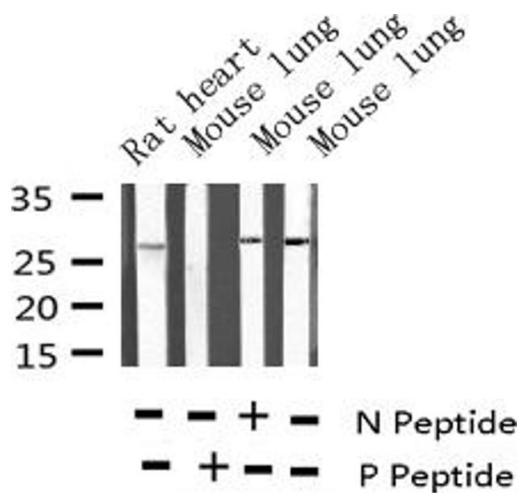
Handling

Format:	Liquid
Concentration:	1 mg/mL
Buffer:	Rabbit IgG in phosphate buffered saline , pH 7.4, 150 mM NaCl, 0.02 % sodium azide and 50 % glycerol.
Preservative:	Sodium azide
Precaution of Use:	This product contains Sodium azide: a POISONOUS AND HAZARDOUS SUBSTANCE which should be handled by trained staff only.
Storage:	-20 °C
Storage Comment:	Store at -20 °C. Stable for 12 months from date of receipt.



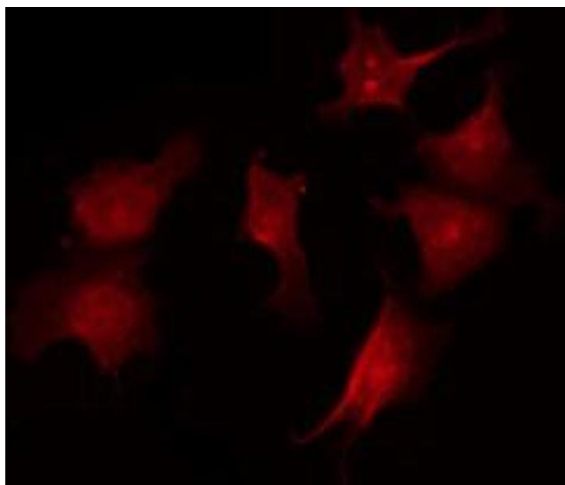
Western Blotting

Image 1. Western blot analysis of p27 Kip1 phosphorylation expression in A2780 whole cell lysates, The lane on the left is treated with the antigen-specific peptide.



Western Blotting

Image 2. Western blot analysis of Phospho-p27 Kip1 (Ser10) expression in various lysates



Immunofluorescence (fixed cells)

Image 3. ABIN6267535 staining A2780 by IF/ICC. The sample were fixed with PFA and permeabilized in 0.1% Triton X-100, then blocked in 10% serum for 45 minutes at 25°C. The primary antibody was diluted at 1/200 and incubated with the sample for 1 hour at 37°C. An Alexa Fluor 594 conjugated goat anti-rabbit IgG (H+L) Ab, diluted at 1/600, was used as the secondary antibody.