



## Datasheet for ABIN6254981 **anti-CREB1 antibody (pSer142)**



[Go to Product page](#)

9 Images

1 Publication

### Overview

Quantity:	100 µL
Target:	CREB1
Binding Specificity:	pSer142
Reactivity:	Human, Mouse, Rat
Host:	Rabbit
Clonality:	Polyclonal
Conjugate:	This CREB1 antibody is un-conjugated
Application:	Western Blotting (WB), Immunohistochemistry (IHC), ELISA, Immunofluorescence (IF), Immunocytochemistry (ICC)

### Product Details

Immunogen:	A synthesized peptide derived from human CREB around the phosphorylation site of Ser142.
Isotype:	IgG
Specificity:	Phospho-CREB (Ser142) Antibody detects endogenous levels of CREB only when phosphorylated at Serine 142.
Predicted Reactivity:	Pig,Bovine,Horse,Sheep,Rabbit,Dog,Chicken,Xenopus
Purification:	The antibody is from purified rabbit serum by affinity purification via sequential chromatography on phospho- and non-phospho-peptide affinity columns.

### Target Details

Target:	CREB1
---------	-------

## Target Details

---

Alternative Name:	CREB1 ( <a href="#">CREB1 Products</a> )
Background:	<p>Description: Phosphorylation-dependent transcription factor that stimulates transcription upon binding to the DNA cAMP response element (CRE), a sequence present in many viral and cellular promoters. Transcription activation is enhanced by the TORC coactivators which act independently of Ser-133 phosphorylation. Involved in different cellular processes including the synchronization of circadian rhythmicity and the differentiation of adipose cells.</p> <p>Gene: CREB1</p>
Molecular Weight:	43kDa
Gene ID:	1385
UniProt:	<a href="#">P16220</a>
Pathways:	<a href="#">TLR Signaling</a> , <a href="#">Fc-epsilon Receptor Signaling Pathway</a> , <a href="#">EGFR Signaling Pathway</a> , <a href="#">Neurotrophin Signaling Pathway</a> , <a href="#">Thyroid Hormone Synthesis</a> , <a href="#">Activation of Innate immune Response</a> , <a href="#">Myometrial Relaxation and Contraction</a> , <a href="#">Regulation of Cell Size</a> , <a href="#">Toll-Like Receptors Cascades</a> , <a href="#">G-protein mediated Events</a> , <a href="#">Interaction of EGFR with phospholipase C-gamma</a> , <a href="#">Positive Regulation of fat Cell Differentiation</a>

## Application Details

---

Application Notes:	WB 1:500-1:2000, IHC 1:50-1:200, IF/ICC 1:100-1:500, ELISA(peptide) 1:20000-1:40000
Restrictions:	For Research Use only

## Handling

---

Format:	Liquid
Concentration:	1 mg/mL
Buffer:	Rabbit IgG in phosphate buffered saline , pH 7.4, 150 mM NaCl, 0.02 % sodium azide and 50 % glycerol.
Preservative:	Sodium azide
Precaution of Use:	This product contains Sodium azide: a POISONOUS AND HAZARDOUS SUBSTANCE which should be handled by trained staff only.
Storage:	-20 °C
Storage Comment:	Store at -20 °C. Stable for 12 months from date of receipt.

## Handling

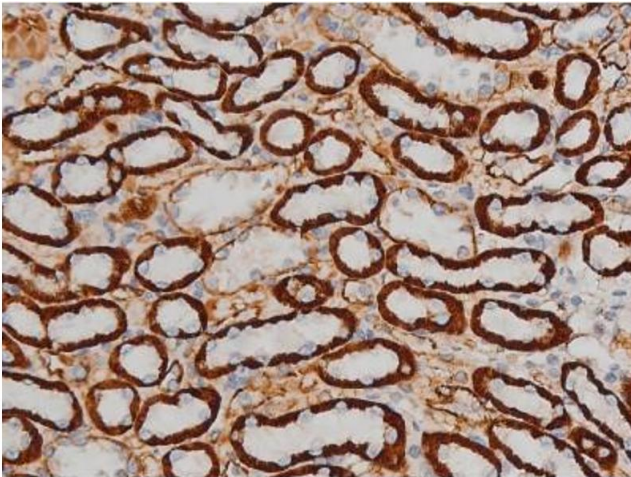
Expiry Date: 12 months

## Publications

Product cited in: Xiaojun, Yan, Hong, Xianghong, Shifeng, Dingjie, Xuemin, Lijuan, Bonan, Zhongqiu, Ruimin, Brann, Fang: "Acetylated  $\alpha$ -Tubulin Regulated by N-Acetyl-Seryl-Aspartyl-Lysyl-Proline(Ac-SDKP) Exerts the Anti-fibrotic Effect in Rat Lung Fibrosis Induced by Silica." in: **Scientific reports**, Vol. 6 , pp. 32257, (2018) ([PubMed](#)).

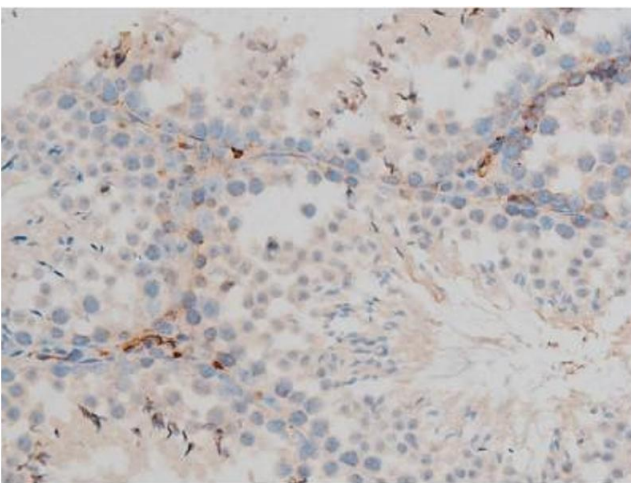
Ye, Jing, Li, Wu, Li, Xu: "Icariin promotes proliferation and osteogenic differentiation of rat adipose-derived stem cells by activating the RhoA-TAZ signaling pathway." in: **Biomedicine & pharmacotherapy**, Vol. 88, pp. 384-394, (2017) ([PubMed](#)).

## Images



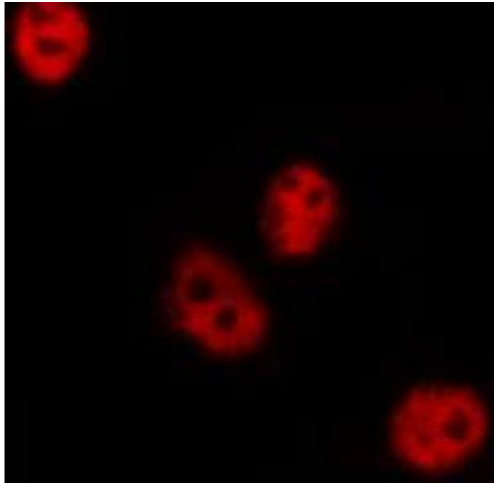
### Immunohistochemistry

**Image 1.** ABIN6267399 at 1/200 staining Rat kidney tissue sections by IHC-P. The tissue was formaldehyde fixed and a heat mediated antigen retrieval step in citrate buffer was performed. The tissue was then blocked and incubated with the antibody for 1.5 hours at 22°C. An HRP conjugated goat anti-rabbit antibody was used as the secondary.



### Immunohistochemistry

**Image 2.** ABIN6267399 at 1/200 staining Mouse testis tissue sections by IHC-P. The tissue was formaldehyde fixed and a heat mediated antigen retrieval step in citrate buffer was performed. The tissue was then blocked and incubated with the antibody for 1.5 hours at 22°C. An HRP conjugated goat anti-rabbit antibody was used as the secondary.



#### Immunofluorescence (fixed cells)

**Image 3.** ABIN6267399 staining HeLa by IF/ICC. The sample were fixed with PFA and permeabilized in 0.1% Triton X-100, then blocked in 10% serum for 45 minutes at 25°C. The primary antibody was diluted at 1/200 and incubated with the sample for 1 hour at 37°C. An Alexa Fluor 594 conjugated goat anti-rabbit IgG (H+L) Ab, diluted at 1/600, was used as the secondary antibody.

Please check the [product details page](#) for more images. Overall 9 images are available for ABIN6254981.