

Datasheet for ABIN6255037

**anti-MITF antibody (pSer73, pSer180)**

10 Images

[Go to Product page](#)

## Overview

Quantity:	100 µL
Target:	MITF
Binding Specificity:	pSer73, pSer180
Reactivity:	Human, Mouse, Rat, Monkey
Host:	Rabbit
Clonality:	Polyclonal
Conjugate:	This MITF antibody is un-conjugated
Application:	Western Blotting (WB), Immunohistochemistry (IHC), Immunofluorescence (IF), ELISA, Immunocytochemistry (ICC)

## Product Details

Immunogen:	A synthesized peptide derived from human MITF around the phosphorylation site of Serine 180/73
Isotype:	IgG
Specificity:	Phospho-MITF (Ser180/73) Antibody detects endogenous levels of MITF only when phosphorylated at Serine 180/73
Cross-Reactivity:	Human, Monkey, Mouse (Murine), Rat (Rattus)
Purification:	The antibody is from purified rabbit serum by affinity purification via sequential chromatography on phospho- and non-phospho-peptide affinity columns.

## Target Details

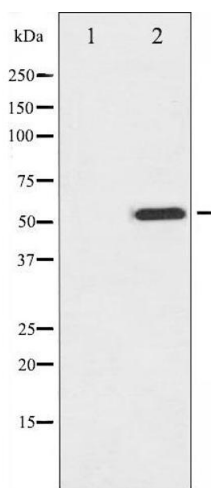
Target:	MITF
Alternative Name:	MITF ( <a href="#">MITF Products</a> )
Background:	<p>Description: Transcription factor that regulates the expression of genes with essential roles in cell differentiation, proliferation and survival. Binds to M-boxes (5'-TCATGTG-3') and symmetrical DNA sequences (E-boxes) (5'-CACGTG-3') found in the promoters of target genes, such as BCL2 and tyrosinase (TYR). Plays an important role in melanocyte development by regulating the expression of tyrosinase (TYR) and tyrosinase-related protein 1 (TYRP1). Plays a critical role in the differentiation of various cell types, such as neural crest-derived melanocytes, mast cells, osteoclasts and optic cup-derived retinal pigment epithelium.</p> <p>Gene: MITF</p>
Molecular Weight:	52kDa
Gene ID:	4286
UniProt:	<a href="#">O75030</a>
Pathways:	<a href="#">Chromatin Binding</a>

## Application Details

Application Notes:	WB 1:500-1:2000 IHC 1:50-1:200, IF/ICC 1:100-1:500
Restrictions:	For Research Use only

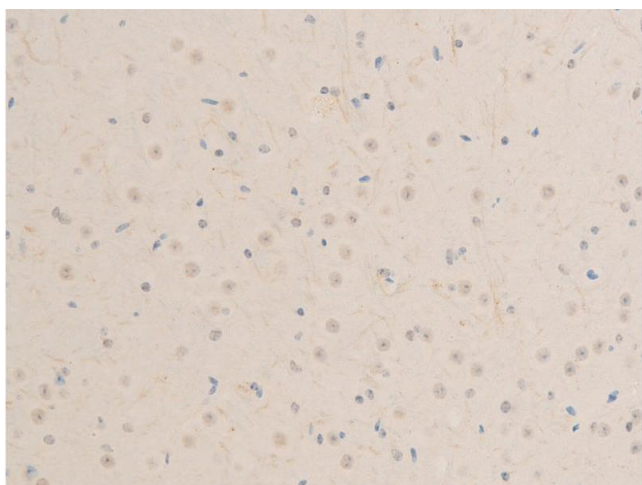
## Handling

Format:	Liquid
Concentration:	1 mg/mL
Buffer:	Rabbit IgG in phosphate buffered saline , pH 7.4, 150 mM NaCl, 0.02 % sodium azide and 50 % glycerol.
Preservative:	Sodium azide
Precaution of Use:	This product contains Sodium azide: a POISONOUS AND HAZARDOUS SUBSTANCE which should be handled by trained staff only.
Storage:	-20 °C
Storage Comment:	Store at -20 °C.Stable for 12 months from date of receipt
Expiry Date:	12 months



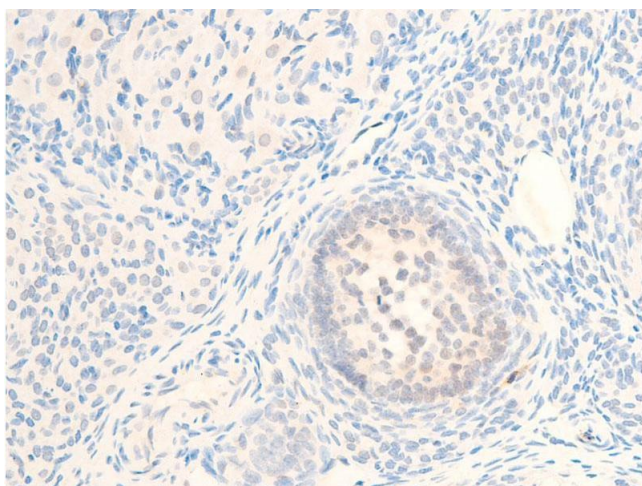
### Western Blotting

**Image 1.** Western blot analysis of MITF phosphorylation expression in COS7 whole cell lysates. The lane on the left is treated with the antigen-specific peptide.



### Immunohistochemistry

**Image 2.** ABIN6267244 at 1/100 staining mouse brain tissue sections by IHC-P. The tissue was formaldehyde fixed and a heat mediated antigen retrieval step in citrate buffer was performed. The tissue was then blocked and incubated with the antibody for 1.5 hours at 22°C. An HRP conjugated goat anti-rabbit antibody was used as the secondary.



### Immunohistochemistry

**Image 3.** ABIN6267244 at 1/100 staining rat ovarian tissue sections by IHC-P. The tissue was formaldehyde fixed and a heat mediated antigen retrieval step in citrate buffer was performed. The tissue was then blocked and incubated with the antibody for 1.5 hours at 22°C. An HRP conjugated goat anti-rabbit antibody was used as the secondary.

Please check the [product details page](#) for more images. Overall 10 images are available for ABIN6255037.