

Datasheet for ABIN6255087
anti-EIF4E antibody (pSer209)[Go to Product page](#)

4 Images

Overview

| | |
|----------------------|--|
| Quantity: | 100 µL |
| Target: | EIF4E |
| Binding Specificity: | pSer209 |
| Reactivity: | Human, Rat, Mouse |
| Host: | Rabbit |
| Clonality: | Polyclonal |
| Conjugate: | This EIF4E antibody is un-conjugated |
| Application: | Western Blotting (WB), Immunohistochemistry (IHC), ELISA, Immunofluorescence (IF), Immunocytochemistry (ICC) |

Product Details

| | |
|-----------------------|---|
| Immunogen: | A synthesized peptide derived from human eIF4E around the phosphorylation site of Ser209. |
| Isotype: | IgG |
| Specificity: | Phospho-eIF4E (Ser209) Antibody detects endogenous levels of eIF4E only when phosphorylated at Serine 209. |
| Predicted Reactivity: | Pig,Bovine,Horse,Sheep,Rabbit,Dog,Chicken,Xenopus |
| Purification: | The antibody is from purified rabbit serum by affinity purification via sequential chromatography on phospho- and non-phospho-peptide affinity columns. |

Target Details

| | |
|---------|-------|
| Target: | EIF4E |
|---------|-------|

Target Details

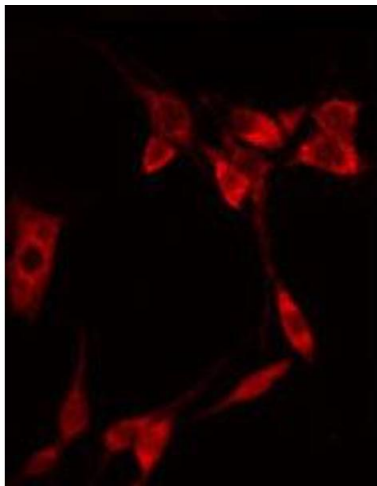
| | |
|-------------------|---|
| Alternative Name: | EIF4E (EIF4E Products) |
| Background: | <p>Description: Recognizes and binds the 7-methylguanosine-containing mRNA cap during an early step in the initiation of protein synthesis and facilitates ribosome binding by inducing the unwinding of the mRNAs secondary structures. Component of the CYFIP1-EIF4E-FMR1 complex which binds to the mRNA cap and mediates translational repression. In the CYFIP1-EIF4E-FMR1 complex this subunit mediates the binding to the mRNA cap.</p> <p>Gene: EIF4E</p> |
| Molecular Weight: | 25kDa |
| Gene ID: | 1977 |
| UniProt: | P06730 |
| Pathways: | BCR Signaling |

Application Details

| | |
|--------------------|---|
| Application Notes: | WB 1:500-1:2000, IHC 1:50-1:200, IF/ICC 1:100-1:500, ELISA(peptide) 1:20000-1:40000 |
| Restrictions: | For Research Use only |

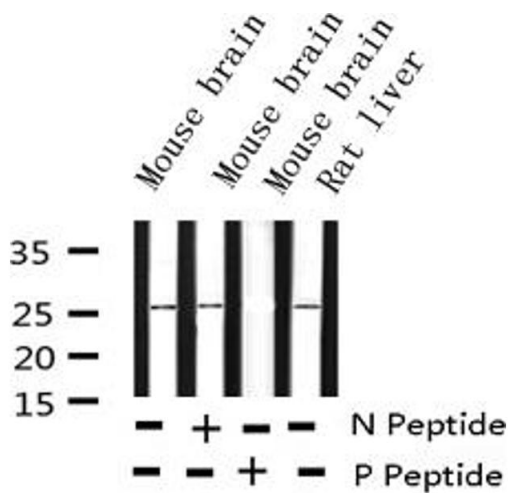
Handling

| | |
|--------------------|--|
| Format: | Liquid |
| Concentration: | 1 mg/mL |
| Buffer: | Rabbit IgG in phosphate buffered saline , pH 7.4, 150 mM NaCl, 0.02 % sodium azide and 50 % glycerol. |
| Preservative: | Sodium azide |
| Precaution of Use: | This product contains Sodium azide: a POISONOUS AND HAZARDOUS SUBSTANCE which should be handled by trained staff only. |
| Storage: | -20 °C |
| Storage Comment: | Store at -20 °C. Stable for 12 months from date of receipt. |
| Expiry Date: | 12 months |



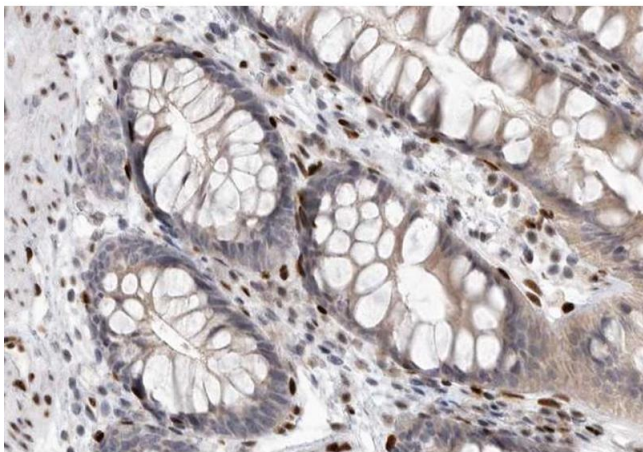
Immunofluorescence (fixed cells)

Image 1. ABIN6267322 staining NIH-3T3 by IF/ICC. The sample were fixed with PFA and permeabilized in 0.1% Triton X-100, then blocked in 10% serum for 45 minutes at 25°C. The primary antibody was diluted at 1/200 and incubated with the sample for 1 hour at 37°C. An Alexa Fluor 594 conjugated goat anti-rabbit IgG (H+L) Ab, diluted at 1/600, was used as the secondary antibody.



Western Blotting

Image 2. Western blot analysis of Phospho-eIF4E (Ser209) expression in various lysates



Immunohistochemistry

Image 3. ABIN6267322 at 1/200 staining human colon carcinoma tissue sections by IHC-P. The tissue was formaldehyde fixed and a heat mediated antigen retrieval step in citrate buffer was performed. The tissue was then blocked and incubated with the antibody for 1.5 hours at 22°C. An HRP conjugated goat anti-rabbit antibody was used as the secondary.

Please check the [product details page](#) for more images. Overall 4 images are available for ABIN6255087.