

Datasheet for ABIN6255108
anti-ATRIP antibody (pSer224)[Go to Product page](#)

2 Images

Overview

Quantity:	100 µL
Target:	ATRIP
Binding Specificity:	pSer224
Reactivity:	Human, Mouse, Rat
Host:	Rabbit
Clonality:	Polyclonal
Conjugate:	This ATRIP antibody is un-conjugated
Application:	Western Blotting (WB), ELISA, Immunohistochemistry (IHC)

Product Details

Immunogen:	A synthesized peptide derived from human ATRIP around the phosphorylation site of Ser224.
Isotype:	IgG
Specificity:	Phospho-ATRIP (Ser224) Antibody detects endogenous levels of ATRIP only when phosphorylated at Ser224.
Predicted Reactivity:	Bovine, Sheep, Rabbit
Purification:	The antibody is from purified rabbit serum by affinity purification via sequential chromatography on phospho- and non-phospho-peptide affinity columns.

Target Details

Target:	ATRIP
---------	-------

Target Details

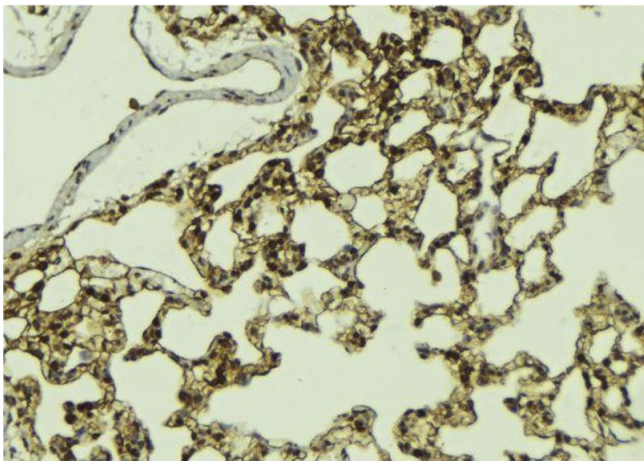
Alternative Name:	ATRIP (ATRIP Products)
Background:	Description: Required for checkpoint signaling after DNA damage. Required for ATR expression, possibly by stabilizing the protein. Gene: ATRIP
Molecular Weight:	85 kDa
Gene ID:	84126
UniProt:	Q8WXE1

Application Details

Application Notes:	WB 1:500-1:2000, IHC 1:50-1:200, ELISA(peptide) 1:20000-1:40000
Restrictions:	For Research Use only

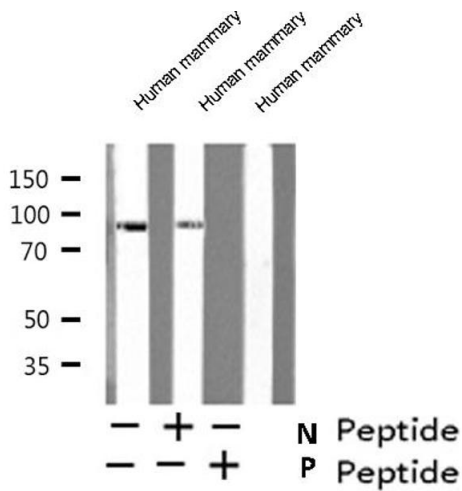
Handling

Format:	Liquid
Concentration:	1 mg/mL
Buffer:	Rabbit IgG in phosphate buffered saline , pH 7.4, 150 mM NaCl, 0.02 % sodium azide and 50 % glycerol.
Preservative:	Sodium azide
Precaution of Use:	This product contains Sodium azide: a POISONOUS AND HAZARDOUS SUBSTANCE which should be handled by trained staff only.
Storage:	-20 °C
Storage Comment:	Store at -20 °C. Stable for 12 months from date of receipt.
Expiry Date:	12 months



Immunohistochemistry

Image 1. ABIN6268983 at 1/100 staining Mouse lung tissue by IHC-P. The sample was formaldehyde fixed and a heat mediated antigen retrieval step in citrate buffer was performed. The sample was then blocked and incubated with the antibody for 1.5 hours at 22°C. An HRP conjugated goat anti-rabbit antibody was used as the secondary.



Western Blotting

Image 2. Western blot analysis of ATRIP (Phospho-Ser224) expression in Human mammary cell lysate