

Datasheet for ABIN6255115
anti-G3BP1 antibody (pSer232)

3 Images

[Go to Product page](#)

Overview

Quantity:	100 µL
Target:	G3BP1
Binding Specificity:	pSer232
Reactivity:	Human, Mouse, Rat
Host:	Rabbit
Clonality:	Polyclonal
Conjugate:	This G3BP1 antibody is un-conjugated
Application:	Western Blotting (WB), Immunohistochemistry (IHC), ELISA, Immunofluorescence (IF), Immunocytochemistry (ICC)

Product Details

Immunogen:	A synthesized peptide derived from human G3BP-1 around the phosphorylation site of Ser232.
Isotype:	IgG
Specificity:	Phospho-G3BP-1 (Ser232) Antibody detects endogenous levels of G3BP-1 only when phosphorylated at Serine 232.
Predicted Reactivity:	Pig,Bovine,Horse,Sheep,Dog
Purification:	The antibody is from purified rabbit serum by affinity purification via sequential chromatography on phospho- and non-phospho-peptide affinity columns.

Target Details

Target:	G3BP1
---------	-------

Target Details

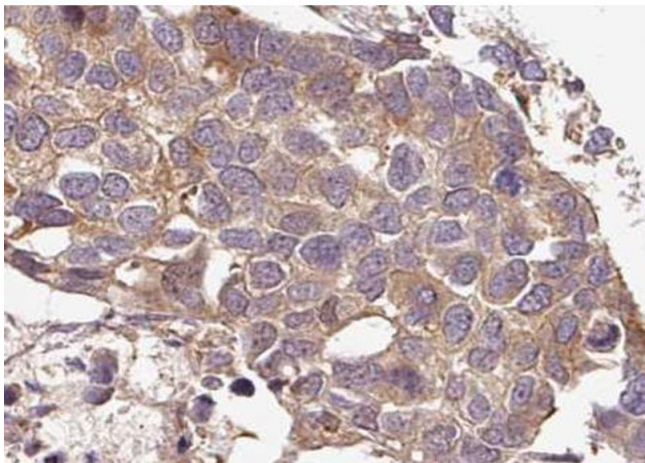
Alternative Name:	G3BP1 (G3BP1 Products)
Background:	<p>Description: May be a regulated effector of stress granule assembly. Phosphorylation-dependent sequence-specific endoribonuclease in vitro. Cleaves exclusively between cytosine and adenine and cleaves MYC mRNA preferentially at the 3'-UTR. ATP- and magnesium-dependent helicase. Unwinds preferentially partial DNA and RNA duplexes having a 17 bp annealed portion and either a hanging 3' tail or hanging tails at both 5'- and 3'-ends. Unwinds DNA/DNA, RNA/DNA, and RNA/RNA substrates with comparable efficiency. Acts unidirectionally by moving in the 5' to 3' direction along the bound single-stranded DNA.</p> <p>Gene: G3BP1</p>
Molecular Weight:	60kDa
Gene ID:	10146
UniProt:	Q13283
Pathways:	SARS-CoV-2 Protein Interactome

Application Details

Application Notes:	WB 1:500-1:2000, IHC 1:50-1:200, IF/ICC 1:100-1:500, ELISA(peptide) 1:20000-1:40000
Restrictions:	For Research Use only

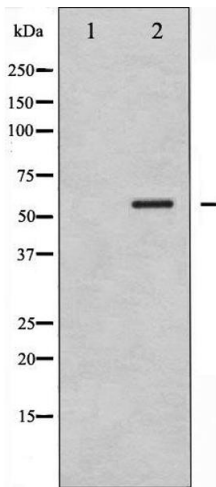
Handling

Format:	Liquid
Concentration:	1 mg/mL
Buffer:	Rabbit IgG in phosphate buffered saline , pH 7.4, 150 mM NaCl, 0.02 % sodium azide and 50 % glycerol.
Preservative:	Sodium azide
Precaution of Use:	This product contains Sodium azide: a POISONOUS AND HAZARDOUS SUBSTANCE which should be handled by trained staff only.
Storage:	-20 °C
Storage Comment:	Store at -20 °C. Stable for 12 months from date of receipt.
Expiry Date:	12 months



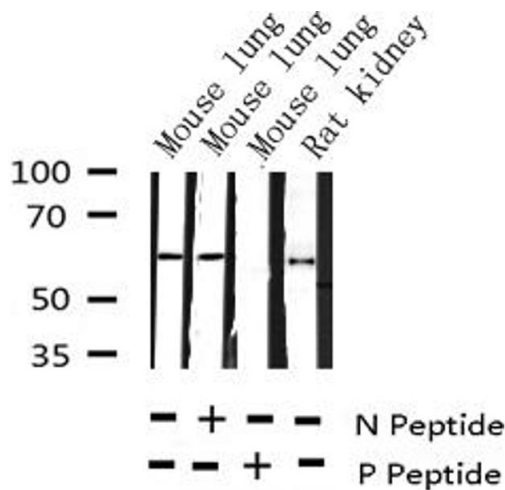
Immunohistochemistry

Image 1. ABIN6267636 at 1/100 staining human breast carcinoma tissue sections by IHC-P. The tissue was formaldehyde fixed and a heat mediated antigen retrieval step in citrate buffer was performed. The tissue was then blocked and incubated with the antibody for 1.5 hours at 22°C. An HRP conjugated goat anti-rabbit antibody was used as the secondary.



Western Blotting

Image 2. Western blot analysis of G3BP-1 phosphorylation expression in 293 whole cell lysates, The lane on the left is treated with the antigen-specific peptide.



Western Blotting

Image 3. Western blot analysis of Phospho-G3BP-1 (Ser232) expression in various lysates