

Datasheet for ABIN6255180  
**anti-Cofilin antibody (pSer3)**

29 Images



[Go to Product page](#)

## Overview

Quantity:	100 µL
Target:	Cofilin (CFL1)
Binding Specificity:	pSer3
Reactivity:	Human, Mouse, Rat
Host:	Rabbit
Clonality:	Polyclonal
Conjugate:	This Cofilin antibody is un-conjugated
Application:	Western Blotting (WB), ELISA, Immunohistochemistry (IHC), Immunofluorescence (IF), Immunocytochemistry (ICC)

## Product Details

Immunogen:	A synthesized peptide derived from human Cofilin around the phosphorylation site of Ser3.
Isotype:	IgG
Specificity:	Phospho-Cofilin (Ser3) Antibody detects endogenous levels of Cofilin only when phosphorylated at Serine 3.
Predicted Reactivity:	Pig,Bovine,Horse,Sheep,Dog
Purification:	The antibody is from purified rabbit serum by affinity purification via sequential chromatography on phospho- and non-phospho-peptide affinity columns.

## Target Details

Target:	Cofilin (CFL1)
---------	----------------

## Target Details

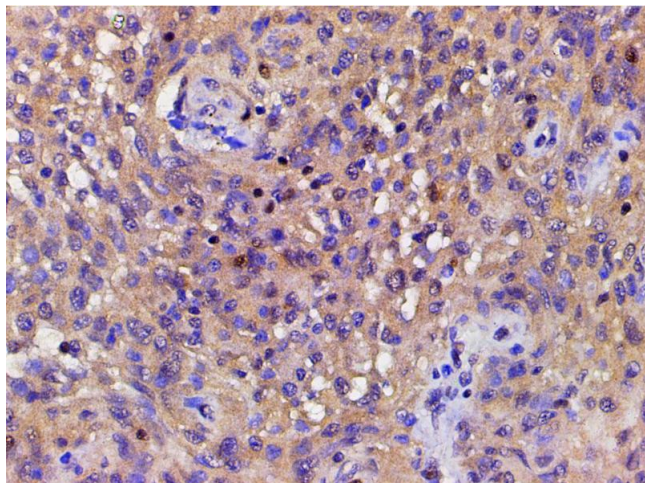
Alternative Name:	CFL1 ( <a href="#">CFL1 Products</a> )
Background:	<p>Description: Binds to F-actin and exhibits pH -sensitive F-actin depolymerizing activity. Regulates actin cytoskeleton dynamics. Important for normal progress through mitosis and normal cytokinesis. Plays a role in the regulation of cell morphology and cytoskeletal organization. Required for the up-regulation of atypical chemokine receptor ACKR2 from endosomal compartment to cell membrane, increasing its efficiency in chemokine uptake and degradation (PubMed:11812157, PubMed:15580268, PubMed:21834987, PubMed:23633677). Required for neural tube morphogenesis and neural crest cell migration (By similarity).</p> <p>Gene: CFL1</p>
Molecular Weight:	19kDa
Gene ID:	1072
UniProt:	<a href="#">P23528</a>
Pathways:	<a href="#">Regulation of Cell Size, Tube Formation, Protein targeting to Nucleus, CXCR4-mediated Signaling Events</a>

## Application Details

Application Notes:	WB 1:500-1:2000, IHC 1:200, IF/ICC 1:200, ELISA(peptide) 1:20000-1:40000
Restrictions:	For Research Use only

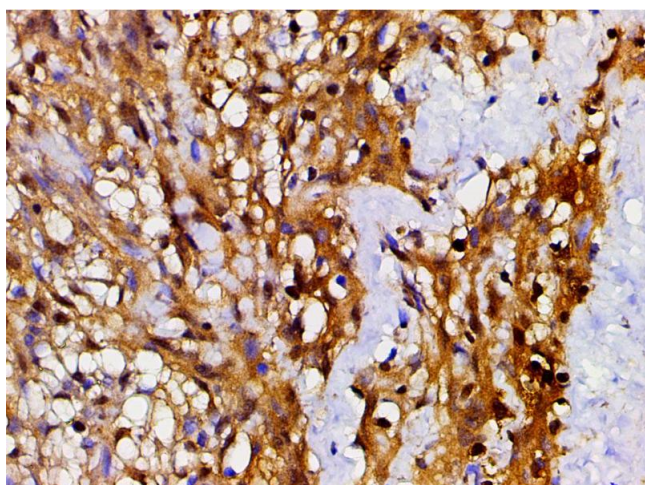
## Handling

Format:	Liquid
Concentration:	1 mg/mL
Buffer:	Rabbit IgG in phosphate buffered saline , pH 7.4, 150 mM NaCl, 0.02 % sodium azide and 50 % glycerol.
Preservative:	Sodium azide
Precaution of Use:	This product contains Sodium azide: a POISONOUS AND HAZARDOUS SUBSTANCE which should be handled by trained staff only.
Storage:	-20 °C
Storage Comment:	Store at -20 °C. Stable for 12 months from date of receipt.
Expiry Date:	12 months



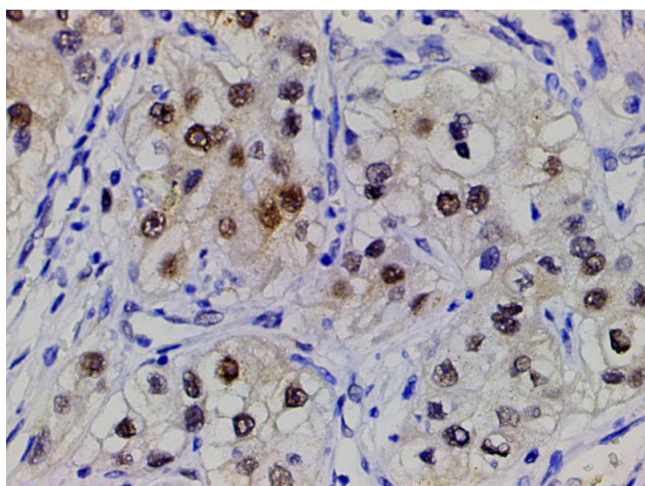
#### Immunohistochemistry

**Image 1.** ABIN6267443 at 1/200 staining human meningeal carcinomatosis(MC) tissue sections by IHC-P. The tissue was formaldehyde fixed and a heat mediated antigen retrieval step in citrate buffer was performed. The tissue was then blocked and incubated with the antibody for 1.5 hours at 22°C. An HRP conjugated goat anti-rabbit antibody was used as the secondary.



#### Immunohistochemistry

**Image 2.** ABIN6267443 at 1/200 staining human meningeal carcinomatosis(MC) tissue sections by IHC-P. The tissue was formaldehyde fixed and a heat mediated antigen retrieval step in citrate buffer was performed. The tissue was then blocked and incubated with the antibody for 1.5 hours at 22°C. An HRP conjugated goat anti-rabbit antibody was used as the secondary.



#### Immunohistochemistry

**Image 3.** ABIN6267443 at 1/200 staining human spleen tissue sections by IHC-P. The tissue was formaldehyde fixed and a heat mediated antigen retrieval step in citrate buffer was performed. The tissue was then blocked and incubated with the antibody for 1.5 hours at 22°C. An HRP conjugated goat anti-rabbit antibody was used as the secondary.

Please check the [product details page](#) for more images. Overall 29 images are available for ABIN6255180.