



Datasheet for ABIN6255185  
**anti-IRS1 antibody (pSer307)**



[Go to Product page](#)

4 Images

3 Publications

## Overview

Quantity:	100 µL
Target:	IRS1
Binding Specificity:	pSer307
Reactivity:	Human, Mouse, Rat, Monkey
Host:	Rabbit
Clonality:	Polyclonal
Conjugate:	This IRS1 antibody is un-conjugated
Application:	Western Blotting (WB), Immunohistochemistry (IHC), ELISA, Immunofluorescence (IF), Immunocytochemistry (ICC)

## Product Details

Immunogen:	A synthesized peptide derived from human IRS-1 around the phosphorylation site of Serine 307
Isotype:	IgG
Specificity:	Phospho-IRS-1 (Ser307) Antibody detects endogenous levels of IRS-1 only when phosphorylated at Serine 307
Cross-Reactivity:	Human, Monkey, Mouse (Murine), Rat (Rattus)
Purification:	The antibody is from purified rabbit serum by affinity purification via sequential chromatography on phospho- and non-phospho-peptide affinity columns.

## Target Details

Target:	IRS1
---------	------

## Target Details

---

Alternative Name:	<a href="#">IRS-1 (IRS1 Products)</a>
Background:	Description: May mediate the control of various cellular processes by insulin. When phosphorylated by the insulin receptor binds specifically to various cellular proteins containing SH2 domains such as phosphatidylinositol 3-kinase p85 subunit or GRB2. Activates phosphatidylinositol 3-kinase when bound to the regulatory p85 subunit (By similarity). Gene: IRS1
Molecular Weight:	180kDa
Gene ID:	3667
UniProt:	<a href="#">P35568</a>
Pathways:	<a href="#">Fc-epsilon Receptor Signaling Pathway</a> , <a href="#">EGFR Signaling Pathway</a> , <a href="#">Neurotrophin Signaling Pathway</a> , <a href="#">Positive Regulation of Peptide Hormone Secretion</a> , <a href="#">Hormone Transport</a> , <a href="#">Negative Regulation of Hormone Secretion</a> , <a href="#">Response to Growth Hormone Stimulus</a> , <a href="#">Carbohydrate Homeostasis</a> , <a href="#">Regulation of Carbohydrate Metabolic Process</a>

## Application Details

---

Application Notes:	WB 1:500-1:2000 IHC 1:50-1:200 IF/ICC 1:100-1:500
Restrictions:	For Research Use only

## Handling

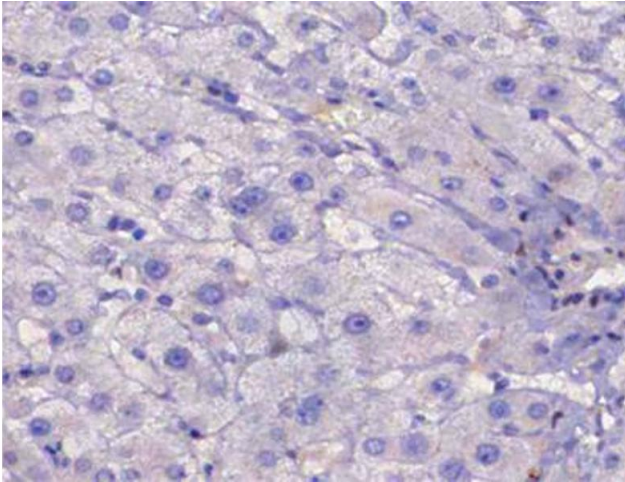
---

Format:	Liquid
Concentration:	1 mg/mL
Buffer:	Rabbit IgG in phosphate buffered saline , pH 7.4, 150 mM NaCl, 0.02 % sodium azide and 50 % glycerol.
Preservative:	Sodium azide
Precaution of Use:	This product contains Sodium azide: a POISONOUS AND HAZARDOUS SUBSTANCE which should be handled by trained staff only.
Storage:	-20 °C
Storage Comment:	Store at -20 °C.Stable for 12 months from date of receipt
Expiry Date:	12 months

Product cited in:

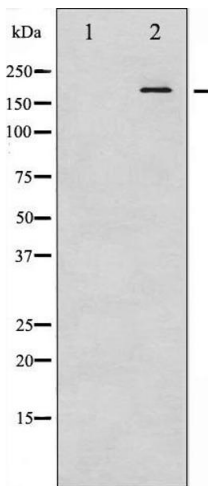
Salimian, Peymani, Ghaedi, Nasr Esfahani: "Modulation in miR-200a/SIRT1 axis is associated with apoptosis in MPP+-induced SH-SY5Y cells." in: **Gene**, Vol. 674, pp. 25-30, (2018) ([PubMed](#)).

Images



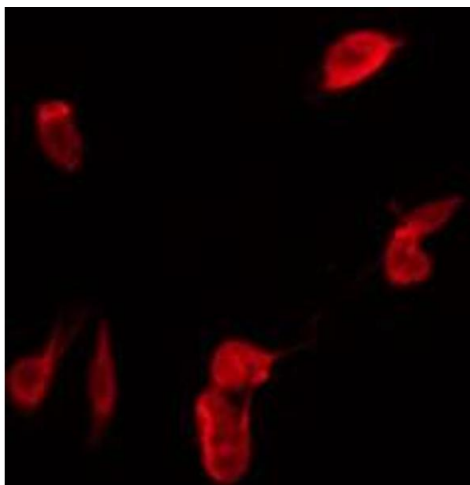
**Immunohistochemistry**

**Image 1.** ABIN6267483 at 1/200 staining human liver cancer tissue sections by IHC-P. The tissue was formaldehyde fixed and a heat mediated antigen retrieval step in citrate buffer was performed. The tissue was then blocked and incubated with the antibody for 1.5 hours at 22°C. An HRP conjugated goat anti-rabbit antibody was used as the secondary.



**Western Blotting**

**Image 2.** Western blot analysis of IRS-1 phosphorylation expression in K562 whole cell lysates, The lane on the left is treated with the antigen-specific peptide.



**Immunofluorescence (fixed cells)**

**Image 3.** ABIN6267483 staining COS7 by IF/ICC. The sample were fixed with PFA and permeabilized in 0.1% Triton X-100, then blocked in 10% serum for 45 minutes at 25°C. The primary antibody was diluted at 1/200 and incubated with the sample for 1 hour at 37°C. An Alexa Fluor 594 conjugated goat anti-rabbit IgG (H+L) Ab, diluted at 1/600, was used as the secondary antibody.

Please check the [product details page](#) for more images. Overall 4 images are available for ABIN6255185.