



[Go to Product page](#)

Datasheet for ABIN6255188  
**anti-GATA3 antibody (pSer308)**

4 Images

Overview

Quantity:	100 µL
Target:	GATA3
Binding Specificity:	pSer308
Reactivity:	Human, Mouse, Rat
Host:	Rabbit
Clonality:	Polyclonal
Conjugate:	This GATA3 antibody is un-conjugated
Application:	Western Blotting (WB), ELISA, Immunofluorescence (IF), Immunocytochemistry (ICC)

Product Details

Immunogen:	A synthesized peptide derived from human GATA3 around the phosphorylation site of Ser308.
Isotype:	IgG
Specificity:	Phospho-GATA3 (Ser308) Antibody detects endogenous levels of GATA3 only when phosphorylated at Serine 308.
Predicted Reactivity:	Pig,Zebrafish,Bovine,Horse,Sheep,Rabbit,Dog,Chicken,Xenopus
Purification:	The antibody is from purified rabbit serum by affinity purification via sequential chromatography on phospho- and non-phospho-peptide affinity columns.

Target Details

Target:	GATA3
---------	-------

## Target Details

---

Alternative Name:	GATA3 ( <a href="#">GATA3 Products</a> )
Background:	Description: Transcriptional activator which binds to the enhancer of the T-cell receptor alpha and delta genes. Binds to the consensus sequence 5'-AGATAG-3'. Required for the T-helper 2 (Th2) differentiation process following immune and inflammatory responses. Gene: GATA3
Molecular Weight:	47kDa
Gene ID:	2625
UniProt:	<a href="#">P23771</a>
Pathways:	<a href="#">Hormone Transport</a> , <a href="#">Regulation of Hormone Metabolic Process</a> , <a href="#">Tube Formation</a>

## Application Details

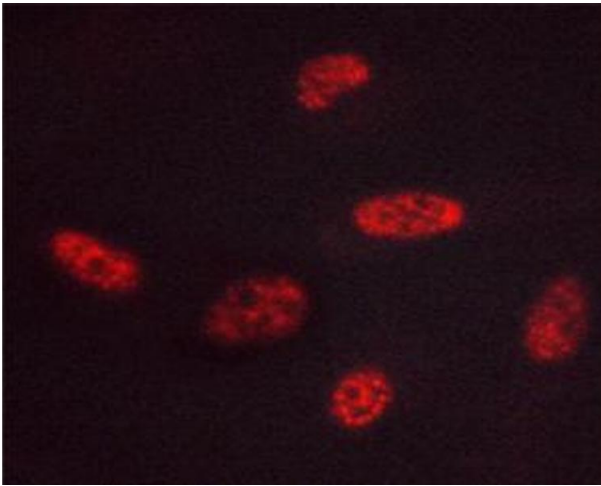
---

Application Notes:	WB 1:500-1:2000, IF/ICC 1:100-1:500, ELISA(peptide) 1:20000-1:40000
Restrictions:	For Research Use only

## Handling

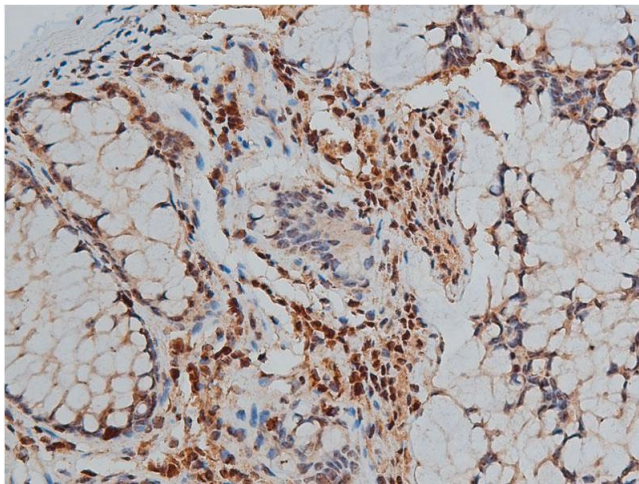
---

Format:	Liquid
Concentration:	1 mg/mL
Buffer:	Rabbit IgG in phosphate buffered saline , pH 7.4, 150 mM NaCl, 0.02 % sodium azide and 50 % glycerol.
Preservative:	Sodium azide
Precaution of Use:	This product contains Sodium azide: a POISONOUS AND HAZARDOUS SUBSTANCE which should be handled by trained staff only.
Storage:	-20 °C
Storage Comment:	Store at -20 °C. Stable for 12 months from date of receipt.
Expiry Date:	12 months



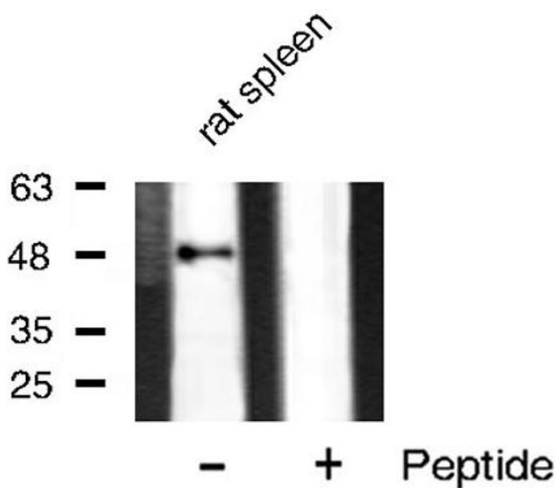
### Immunofluorescence (fixed cells)

**Image 1.** ABIN6267444 staining HUVEC cells by ICC/IF. Cells were fixed with PFA and permeabilized in 0.1% saponin prior to blocking in 10% serum for 45 minutes at 37°C. The primary antibody was diluted 1/400 and incubated with the sample for 1 hour at 37°C. A Alexa Fluor 594 conjugated goat polyclonal to rabbit IgG (H+L), diluted 1/600 was used as secondary antibody.



### Immunohistochemistry

**Image 2.** ABIN6267444 at 1/50 staining human colon cancer tissue sections by IHC-P. The tissue was formaldehyde fixed and a heat mediated antigen retrieval step in citrate buffer was performed. The tissue was then blocked and incubated with the antibody for 1.5 hours at 22°C. An HRP conjugated goat anti-rabbit antibody was used as the secondary.



### Western Blotting

**Image 3.** Western blot analysis of GATA3 phosphorylation expression in rat spleen tissue lysates, The lane on the right is treated with the antigen-specific peptide.

Please check the [product details page](#) for more images. Overall 4 images are available for ABIN6255188.