

Datasheet for ABIN6255250  
**anti-CDC25B antibody (pSer353)**

## 3 Images

[Go to Product page](#)

## Overview

Quantity:	100 µL
Target:	CDC25B
Binding Specificity:	pSer353
Reactivity:	Human, Mouse
Host:	Rabbit
Clonality:	Polyclonal
Conjugate:	This CDC25B antibody is un-conjugated
Application:	Western Blotting (WB), ELISA, Immunohistochemistry (IHC), Immunofluorescence (IF), Immunocytochemistry (ICC)

## Product Details

Immunogen:	A synthesized peptide derived from human CDC25B around the phosphorylation site of Serine 353
Isotype:	IgG
Specificity:	Phospho-CDC25B (Ser353) Antibody detects endogenous levels of CDC25B only when phosphorylated at Serine 353
Cross-Reactivity:	Human, Mouse (Murine)
Purification:	The antibody is from purified rabbit serum by affinity purification via sequential chromatography on phospho- and non-phospho-peptide affinity columns.

## Target Details

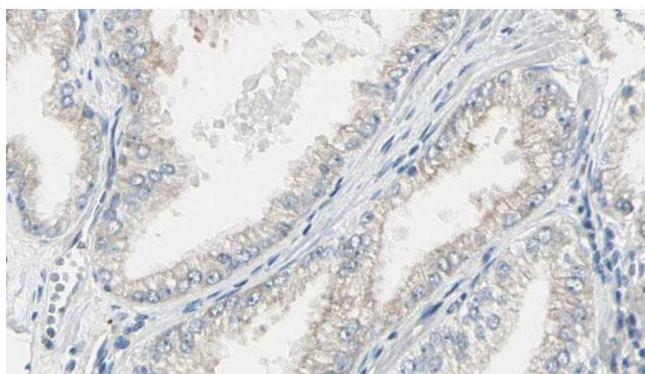
Target:	CDC25B
Alternative Name:	CDC25B ( <a href="#">CDC25B Products</a> )
Background:	<p>Description: Tyrosine protein phosphatase which functions as a dosage-dependent inducer of mitotic progression. Required for G2/M phases of the cell cycle progression and abscission during cytokinesis in a ECT2-dependent manner. Directly dephosphorylates CDK1 and stimulates its kinase activity. The three isoforms seem to have a different level of activity.</p> <p>Gene: CDC25B</p>
Molecular Weight:	64kDa
Gene ID:	994
UniProt:	<a href="#">P30305</a>
Pathways:	<a href="#">Cell Division Cycle</a> , <a href="#">M Phase</a> , <a href="#">Autophagy</a>

## Application Details

Application Notes:	WB 1:500-1:2000 IHC 1:50-1:200, IF/ICC 1:100-1:500
Restrictions:	For Research Use only

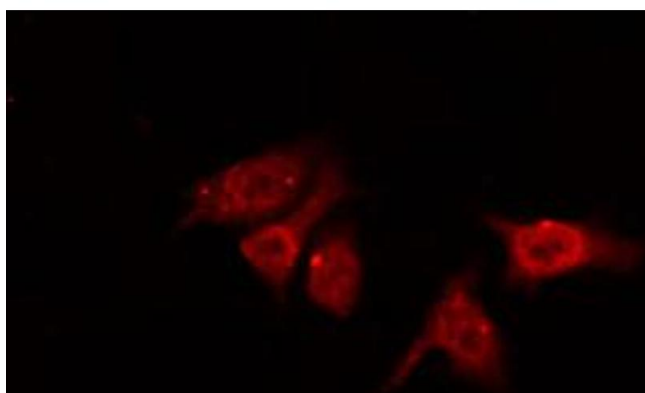
## Handling

Format:	Liquid
Concentration:	1 mg/mL
Buffer:	Rabbit IgG in phosphate buffered saline , pH 7.4, 150 mM NaCl, 0.02 % sodium azide and 50 % glycerol.
Preservative:	Sodium azide
Precaution of Use:	This product contains Sodium azide: a POISONOUS AND HAZARDOUS SUBSTANCE which should be handled by trained staff only.
Storage:	-20 °C
Storage Comment:	Store at -20 °C.Stable for 12 months from date of receipt
Expiry Date:	12 months



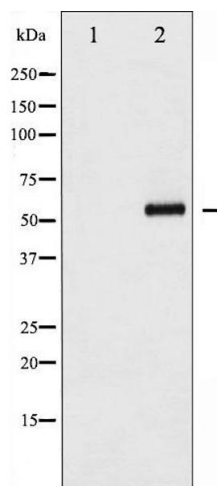
### Immunohistochemistry

**Image 1.** ABIN6267468 at 1/100 staining Human prostate tissue by IHC-P. The sample was formaldehyde fixed and a heat mediated antigen retrieval step in citrate buffer was performed. The sample was then blocked and incubated with the antibody for 1.5 hours at 22°C. An HRP conjugated goat anti-rabbit antibody was used as the secondary.



### Immunofluorescence (fixed cells)

**Image 2.** ABIN6267468 staining NIH-3T3 by IF/ICC. The sample were fixed with PFA and permeabilized in 0.1% Triton X-100, then blocked in 10% serum for 45 minutes at 25°C. The primary antibody was diluted at 1/200 and incubated with the sample for 1 hour at 37°C. An Alexa Fluor 594 conjugated goat anti-rabbit IgG (H+L) Ab, diluted at 1/600, was used as the secondary antibody.



### Western Blotting

**Image 3.** Western blot analysis of CDC25B phosphorylation expression in etoposide treated COS7 whole cell lysates, The lane on the left is treated with the antigen-specific peptide.