



Datasheet for ABIN6255266
anti-PKM antibody (pSer37)



[Go to Product page](#)

2 Images

Overview

Quantity:	100 µL
Target:	PKM
Binding Specificity:	pSer37
Reactivity:	Human, Mouse, Rat
Host:	Rabbit
Clonality:	Polyclonal
Conjugate:	This PKM antibody is un-conjugated
Application:	ELISA, Western Blotting (WB), Immunohistochemistry (IHC)

Product Details

Immunogen:	A synthesized peptide derived from human PKM2 around the phosphorylation site of Ser37.
Isotype:	IgG
Specificity:	Phospho-PKM2 (Ser37) Antibody detects endogenous levels of PKM2 only when phosphorylated at Ser37.
Predicted Reactivity:	Pig,Bovine,Sheep,Rabbit,Dog,Chicken,Xenopus
Purification:	The antibody is from purified rabbit serum by affinity purification via sequential chromatography on phospho- and non-phospho-peptide affinity columns.

Target Details

Target:	PKM
---------	-----

Target Details

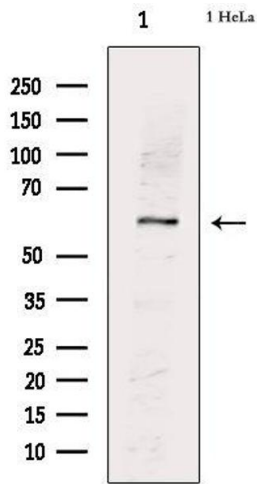
Alternative Name:	PKM (PKM Products)
Background:	<p>Description: Glycolytic enzyme that catalyzes the transfer of a phosphoryl group from phosphoenolpyruvate (PEP) to ADP, generating ATP. Stimulates POU5F1-mediated transcriptional activation. Plays a general role in caspase independent cell death of tumor cells. The ratio between the highly active tetrameric form and nearly inactive dimeric form determines whether glucose carbons are channeled to biosynthetic processes or used for glycolytic ATP production. The transition between the 2 forms contributes to the control of glycolysis and is important for tumor cell proliferation and survival.</p> <p>Gene: PKM</p>
Molecular Weight:	58 kDa
Gene ID:	5315
UniProt:	P14618
Pathways:	Warburg Effect

Application Details

Application Notes:	WB 1:1000-3000, IHC 1:50-1:200, ELISA(peptide) 1:20000-1:40000
Restrictions:	For Research Use only

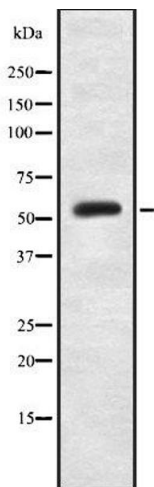
Handling

Format:	Liquid
Concentration:	1 mg/mL
Buffer:	Rabbit IgG in phosphate buffered saline , pH 7.4, 150 mM NaCl, 0.02 % sodium azide and 50 % glycerol.
Preservative:	Sodium azide
Precaution of Use:	This product contains Sodium azide: a POISONOUS AND HAZARDOUS SUBSTANCE which should be handled by trained staff only.
Storage:	-20 °C
Storage Comment:	Store at -20 °C. Stable for 12 months from date of receipt.
Expiry Date:	12 months



Western Blotting

Image 1. Western blot analysis of extracts from HeLa cells, using PKM2(phospho-Ser37) Antibody.



Western Blotting

Image 2. Western blot analysis of PKM2(phospho-Ser37) using HeLa whole lysates.