



[Go to Product page](#)

Datasheet for ABIN6255310
anti-MAPT antibody (pSer404)

4 Images

Overview

| | |
|----------------------|----------------------------------------------------------|
| Quantity: | 100 µL |
| Target: | MAPT |
| Binding Specificity: | pSer404 |
| Reactivity: | Human, Rat, Mouse |
| Host: | Rabbit |
| Clonality: | Polyclonal |
| Conjugate: | This MAPT antibody is un-conjugated |
| Application: | Western Blotting (WB), ELISA, Immunohistochemistry (IHC) |

Product Details

| | |
|-----------------------|---------------------------------------------------------------------------------------------------------------------------------------------------------|
| Immunogen: | A synthesized peptide derived from human Tau around the phosphorylation site of Ser404. |
| Isotype: | IgG |
| Specificity: | Phospho-Tau (Ser404) Antibody detects endogenous levels of Tau only when phosphorylated at Ser721, which site historically referenced as Ser404. |
| Predicted Reactivity: | Pig,Bovine,Horse,Sheep,Rabbit,Dog,Xenopus |
| Purification: | The antibody is from purified rabbit serum by affinity purification via sequential chromatography on phospho- and non-phospho-peptide affinity columns. |

Target Details

| | |
|---------|------|
| Target: | MAPT |
|---------|------|

Target Details

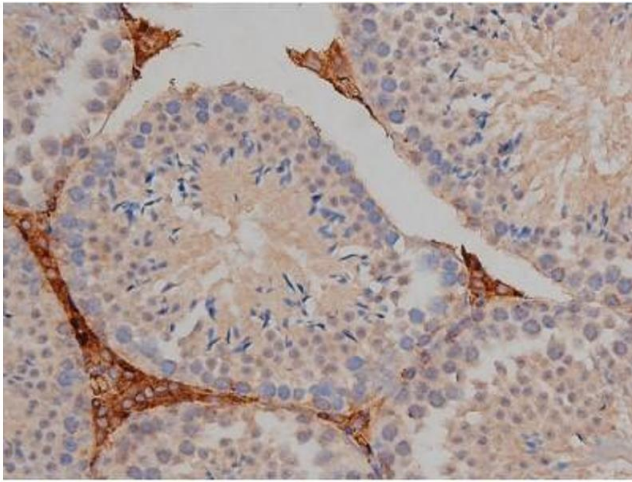
| | |
|-------------------|--------------------------------------------------------------------------------------------------------------------------------------------------------------------------------------------------------------------------------------------------------------------------------------------------------------------------------------------------------------------------------------------------------------------------------------------------------------------------------------------------------------------------------------------------------------------------------------------------------------------------------|
| Alternative Name: | MAPT (MAPT Products) |
| Background: | <p>Description: Promotes microtubule assembly and stability, and might be involved in the establishment and maintenance of neuronal polarity. The C-terminus binds axonal microtubules while the N-terminus binds neural plasma membrane components, suggesting that tau functions as a linker protein between both. Axonal polarity is predetermined by TAU/MAPT localization (in the neuronal cell) in the domain of the cell body defined by the centrosome. The short isoforms allow plasticity of the cytoskeleton whereas the longer isoforms may preferentially play a role in its stabilization.</p> <p>Gene: MAPT</p> |
| Molecular Weight: | 78kDa |
| Gene ID: | 4137 |
| UniProt: | P10636 |
| Pathways: | MAPK Signaling , Microtubule Dynamics , M Phase , Regulation of Cell Size |

Application Details

| | |
|--------------------|-----------------------------------------------------------------|
| Application Notes: | WB 1:500-1:2000, IHC 1:50-1:200, ELISA(peptide) 1:20000-1:40000 |
| Restrictions: | For Research Use only |

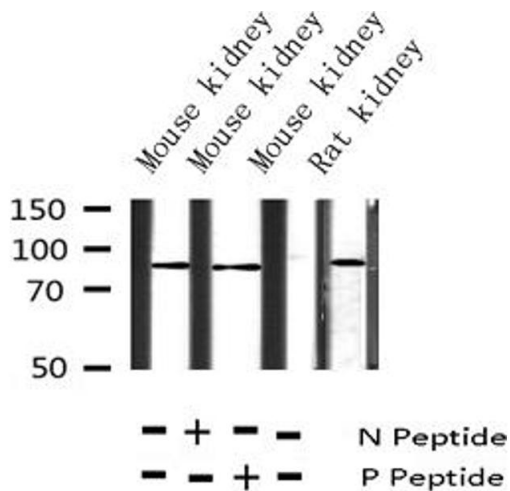
Handling

| | |
|--------------------|------------------------------------------------------------------------------------------------------------------------|
| Format: | Liquid |
| Concentration: | 1 mg/mL |
| Buffer: | Rabbit IgG in phosphate buffered saline , pH 7.4, 150 mM NaCl, 0.02 % sodium azide and 50 % glycerol. |
| Preservative: | Sodium azide |
| Precaution of Use: | This product contains Sodium azide: a POISONOUS AND HAZARDOUS SUBSTANCE which should be handled by trained staff only. |
| Storage: | -20 °C |
| Storage Comment: | Store at -20 °C. Stable for 12 months from date of receipt. |
| Expiry Date: | 12 months |



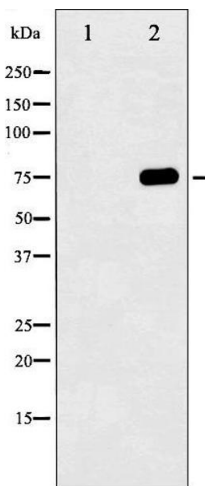
Immunohistochemistry

Image 1. ABIN6267356 at 1/200 staining Mouse testis tissue sections by IHC-P. The tissue was formaldehyde fixed and a heat mediated antigen retrieval step in citrate buffer was performed. The tissue was then blocked and incubated with the antibody for 1.5 hours at 22°C. An HRP conjugated goat anti-rabbit antibody was used as the secondary.



Western Blotting

Image 2. Western blot analysis of Phospho-Tau (Ser404) expression in various lysates



Western Blotting

Image 3. Western blot analysis of Tau phosphorylation expression in UV treated 293 whole cell lysates, The lane on the left is treated with the antigen-specific peptide.

Please check the [product details page](#) for more images. Overall 4 images are available for ABIN6255310.