

Datasheet for ABIN6255321  
**anti-EIF4B antibody (pSer422)**[Go to Product page](#)

## 3 Images

## Overview

Quantity:	100 µL
Target:	EIF4B
Binding Specificity:	pSer422
Reactivity:	Human, Mouse
Host:	Rabbit
Clonality:	Polyclonal
Conjugate:	This EIF4B antibody is un-conjugated
Application:	Western Blotting (WB), ELISA, Immunohistochemistry (IHC), Immunofluorescence (IF), Immunocytochemistry (ICC)

## Product Details

Immunogen:	A synthesized peptide derived from human eIF4B around the phosphorylation site of Ser422.
Isotype:	IgG
Specificity:	Phospho-eIF4B (Ser422) Antibody detects endogenous levels of eIF4B only when phosphorylated at Ser422.
Predicted Reactivity:	Bovine,Horse,Sheep,Rabbit,Dog,Xenopus
Purification:	The antibody is from purified rabbit serum by affinity purification via sequential chromatography on phospho- and non-phospho-peptide affinity columns.

## Target Details

Target:	EIF4B
---------	-------

## Target Details

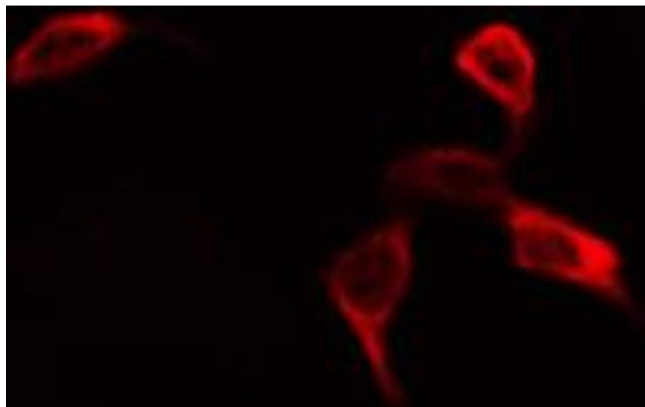
Alternative Name:	EIF4B ( <a href="#">EIF4B Products</a> )
Background:	<p>Description: Required for the binding of mRNA to ribosomes. Functions in close association with EIF4-F and EIF4-A. Binds near the 5'-terminal cap of mRNA in presence of EIF-4F and ATP. Promotes the ATPase activity and the ATP-dependent RNA unwinding activity of both EIF4-A and EIF4-F.</p> <p>Gene: EIF4B</p>
Molecular Weight:	69 kDa
Gene ID:	1975
UniProt:	<a href="#">P23588</a>

## Application Details

Application Notes:	WB 1:500-1:2000, IHC 1:50-1:200, IF/ICC 1:100-1:500, ELISA(peptide) 1:20000-1:40000
Restrictions:	For Research Use only

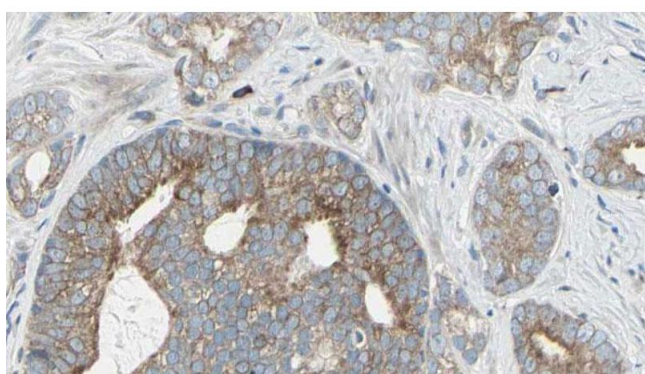
## Handling

Format:	Liquid
Concentration:	1 mg/mL
Buffer:	Rabbit IgG in phosphate buffered saline , pH 7.4, 150 mM NaCl, 0.02 % sodium azide and 50 % glycerol.
Preservative:	Sodium azide
Precaution of Use:	This product contains Sodium azide: a POISONOUS AND HAZARDOUS SUBSTANCE which should be handled by trained staff only.
Storage:	-20 °C
Storage Comment:	Store at -20 °C. Stable for 12 months from date of receipt.
Expiry Date:	12 months



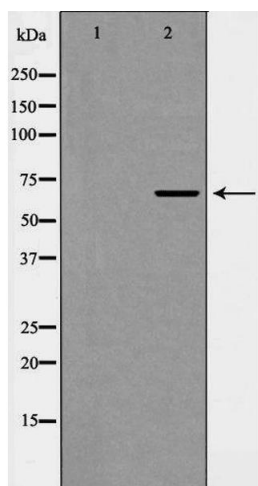
#### Immunofluorescence (fixed cells)

**Image 1.** ABIN6268974 staining NIH-3T3 by IF/ICC. The sample were fixed with PFA and permeabilized in 0.1% Triton X-100, then blocked in 10% serum for 45 minutes at 25°C. The primary antibody was diluted at 1/200 and incubated with the sample for 1 hour at 37°C. An Alexa Fluor 594 conjugated goat anti-rabbit IgG (H+L) Ab, diluted at 1/600, was used as the secondary antibody.



#### Immunohistochemistry

**Image 2.** ABIN6268974 at 1/100 staining Human prostate tissue by IHC-P. The sample was formaldehyde fixed and a heat mediated antigen retrieval step in citrate buffer was performed. The sample was then blocked and incubated with the antibody for 1.5 hours at 22°C. An HRP conjugated goat anti-rabbit antibody was used as the secondary.



#### Western Blotting

**Image 3.** Western blot analysis of eIF4B (Phospho-Ser422) expression in HepG2 cells. The lane on the left is treated with the antigen-specific peptide.