

Datasheet for ABIN6255342

anti-ATF2 antibody (pSer44, pSer62)



[Go to Product page](#)

5 Images

Overview

Quantity:	100 µL
Target:	ATF2
Binding Specificity:	pSer44, pSer62
Reactivity:	Human, Mouse, Rat
Host:	Rabbit
Clonality:	Polyclonal
Conjugate:	This ATF2 antibody is un-conjugated
Application:	Western Blotting (WB), Immunohistochemistry (IHC), ELISA, Immunoprecipitation (IP), Immunofluorescence (IF), Immunocytochemistry (ICC)

Product Details

Immunogen:	A synthesized peptide derived from human ATF2 around the phosphorylation site of Ser62 or 44.
Isotype:	IgG
Specificity:	Phospho-ATF2 (Ser62/Ser44) Antibody detects endogenous levels of ATF2 only when phosphorylated at Serine 62 or 44.
Predicted Reactivity:	Zebrafish,Bovine,Horse,Sheep,Rabbit,Dog,Chicken,Xenopus
Purification:	The antibody is from purified rabbit serum by affinity purification via sequential chromatography on phospho- and non-phospho-peptide affinity columns.

Target Details

Target:	ATF2
Alternative Name:	ATF2 (ATF2 Products)
Background:	<p>Description: Transcriptional activator which regulates the transcription of various genes, including those involved in anti-apoptosis, cell growth, and DNA damage response. Dependent on its binding partner, binds to CRE (cAMP response element) consensus sequences (5'-TGACGTCA-3') or to AP-1 (activator protein 1) consensus sequences (5'-TGACTCA-3'). In the nucleus, contributes to global transcription and the DNA damage response, in addition to specific transcriptional activities that are related to cell development, proliferation and death. In the cytoplasm, interacts with and perturbs HK1- and VDAC1-containing complexes at the mitochondrial outer membrane, thereby impairing mitochondrial membrane potential, inducing mitochondrial leakage and promoting cell death. The phosphorylated form (mediated by ATM) plays a role in the DNA damage response and is involved in the ionizing radiation (IR)-induced S phase checkpoint control and in the recruitment of the MRN complex into the IR-induced foci (IRIF). Exhibits histone acetyltransferase (HAT) activity which specifically acetylates histones H2B and H4 in vitro. In concert with CUL3 and RBX1, promotes the degradation of KAT5 thereby attenuating its ability to acetylate and activate ATM. Can elicit oncogenic or tumor suppressor activities depending on the tissue or cell type.</p> <p>Gene: ATF2</p>
Molecular Weight:	52kDa
Gene ID:	1386
UniProt:	P15336
Pathways:	MAPK Signaling , RTK Signaling , Thyroid Hormone Synthesis , Activation of Innate immune Response , Chromatin Binding , Myometrial Relaxation and Contraction , Synaptic Membrane , Tube Formation , Toll-Like Receptors Cascades

Application Details

Application Notes:	WB 1:500-1:2000, IHC 1:50-1:200, IP, IF/ICC 1:100-1:500, ELISA(peptide) 1:20000-1:40000
Restrictions:	For Research Use only

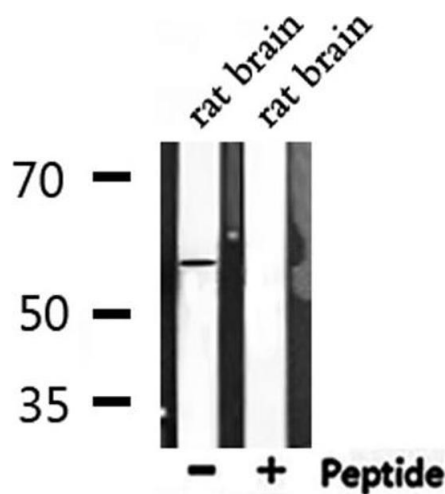
Handling

Format:	Liquid
Concentration:	1 mg/mL

Handling

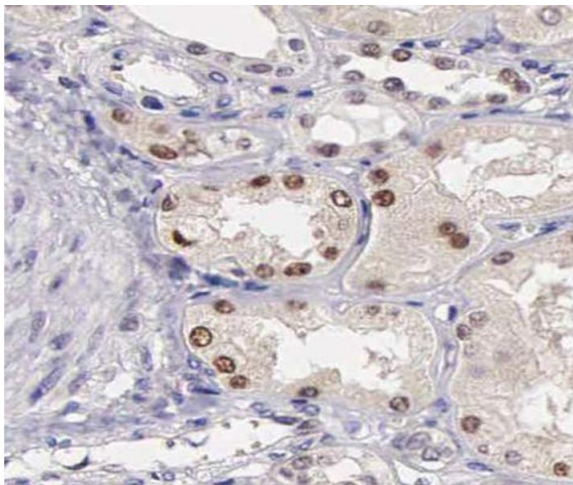
Buffer:	Rabbit IgG in phosphate buffered saline , pH 7.4, 150 mM NaCl, 0.02 % sodium azide and 50 % glycerol.
Preservative:	Sodium azide
Precaution of Use:	This product contains Sodium azide: a POISONOUS AND HAZARDOUS SUBSTANCE which should be handled by trained staff only.
Storage:	-20 °C
Storage Comment:	Store at -20 °C. Stable for 12 months from date of receipt.
Expiry Date:	12 months

Images



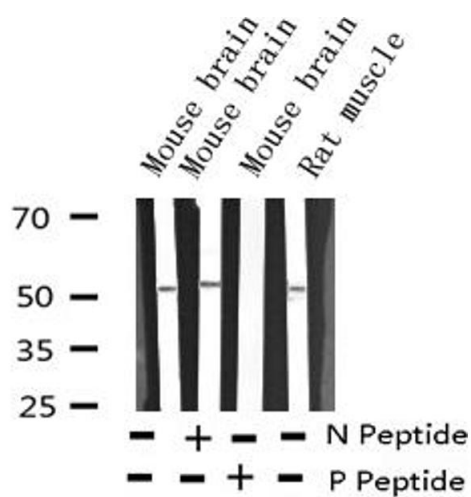
Western Blotting

Image 1. Western blot analysis of extracts from rat brain, using Phospho-ATF2 (Ser62/44) Antibody.



Immunohistochemistry

Image 2. ABIN6267387 at 1/200 staining human kidney tissue sections by IHC-P. The tissue was formaldehyde fixed and a heat mediated antigen retrieval step in citrate buffer was performed. The tissue was then blocked and incubated with the antibody for 1.5 hours at 22°C. An HRP conjugated goat anti-rabbit antibody was used as the secondary.



Western Blotting

Image 3. Western blot analysis of Phospho-ATF2 (Ser62 or 44) expression in various lysates

Please check the [product details page](#) for more images. Overall 5 images are available for ABIN6255342.