



[Go to Product page](#)

Datasheet for ABIN6255357  
**anti-SMAD1 antibody (pSer465)**

4 Images

### Overview

Quantity:	100 µL
Target:	SMAD1
Binding Specificity:	pSer465
Reactivity:	Human, Mouse, Rat
Host:	Rabbit
Clonality:	Polyclonal
Conjugate:	This SMAD1 antibody is un-conjugated
Application:	Western Blotting (WB), ELISA, Immunohistochemistry (IHC), Immunofluorescence (IF), Immunocytochemistry (ICC)

### Product Details

Immunogen:	A synthesized peptide derived from human Smad1 around the phosphorylation site of Ser465.
Isotype:	IgG
Specificity:	Phospho-Smad1 (Ser465) Antibody detects endogenous levels of Smad1 only when phosphorylated at Serine 465.
Predicted Reactivity:	Pig,Zebrafish,Bovine,Sheep,Rabbit,Dog,Chicken,Xenopus
Purification:	The antibody is from purified rabbit serum by affinity purification via sequential chromatography on phospho- and non-phospho-peptide affinity columns.

### Target Details

Target:	SMAD1
---------	-------

## Target Details

---

Alternative Name:	SMAD1 ( <a href="#">SMAD1 Products</a> )
Background:	<p>Description: Transcriptional modulator activated by BMP (bone morphogenetic proteins) type 1 receptor kinase. SMAD1 is a receptor-regulated SMAD (R-SMAD). SMAD1/OAZ1/PSMB4 complex mediates the degradation of the CREBBP/EP300 repressor SNIP1. May act synergistically with SMAD4 and YY1 in bone morphogenetic protein (BMP)-mediated cardiac-specific gene expression.</p> <p>Gene: SMAD1</p>
Molecular Weight:	60kDa
Gene ID:	4086
UniProt:	<a href="#">Q15797</a>
Pathways:	<a href="#">Stem Cell Maintenance</a> , <a href="#">Regulation of Muscle Cell Differentiation</a> , <a href="#">Skeletal Muscle Fiber Development</a>

## Application Details

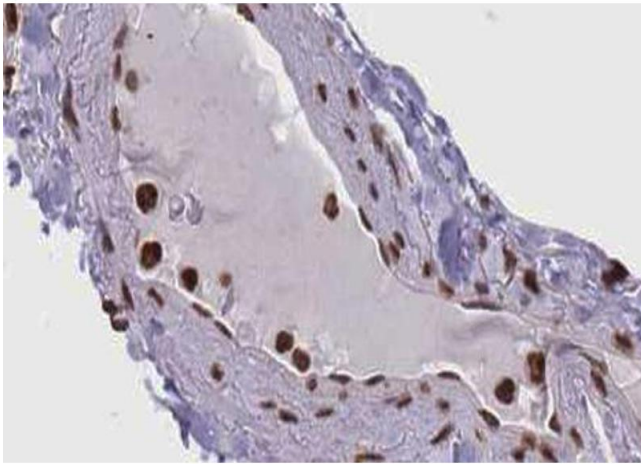
---

Application Notes:	WB 1:500-1:2000, IHC 1:50-1:200, IF/ICC 1:100-1:500, ELISA(peptide) 1:20000-1:40000
Restrictions:	For Research Use only

## Handling

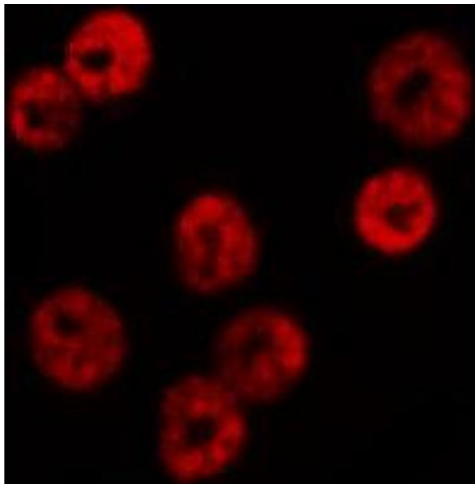
---

Format:	Liquid
Concentration:	1 mg/mL
Buffer:	Rabbit IgG in phosphate buffered saline , pH 7.4, 150 mM NaCl, 0.02 % sodium azide and 50 % glycerol.
Preservative:	Sodium azide
Precaution of Use:	This product contains Sodium azide: a POISONOUS AND HAZARDOUS SUBSTANCE which should be handled by trained staff only.
Storage:	-20 °C
Storage Comment:	Store at -20 °C. Stable for 12 months from date of receipt.
Expiry Date:	12 months



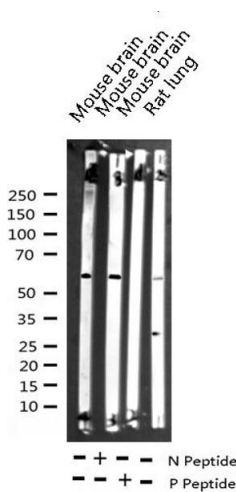
### Immunohistochemistry

**Image 1.** ABIN6267660 at 1/100 staining human lung carcinoma tissue sections by IHC-P. The tissue was formaldehyde fixed and a heat mediated antigen retrieval step in citrate buffer was performed. The tissue was then blocked and incubated with the antibody for 1.5 hours at 22°C. An HRP conjugated goat anti-rabbit antibody was used as the secondary.



### Immunofluorescence (fixed cells)

**Image 2.** ABIN6267660 staining HeLa by IF/ICC. The sample were fixed with PFA and permeabilized in 0.1% Triton X-100, then blocked in 10% serum for 45 minutes at 25°C. The primary antibody was diluted at 1/200 and incubated with the sample for 1 hour at 37°C. An Alexa Fluor 594 conjugated goat anti-rabbit IgG (H+L) Ab, diluted at 1/600, was used as the secondary antibody.



### Western Blotting

**Image 3.** Western blot analysis of Phospho-Smad1 (Ser465) expression in various lysates

Please check the [product details page](#) for more images. Overall 4 images are available for ABIN6255357.