



Datasheet for ABIN6255468
anti-ATRIP antibody (pSer68)



[Go to Product page](#)

3 Images

Overview

Quantity:	100 µL
Target:	ATRIP
Binding Specificity:	pSer68
Reactivity:	Human, Mouse, Rat
Host:	Rabbit
Clonality:	Polyclonal
Conjugate:	This ATRIP antibody is un-conjugated
Application:	Western Blotting (WB), ELISA, Immunofluorescence (IF), Immunocytochemistry (ICC)

Product Details

Immunogen:	A synthesized peptide derived from human ATRIP around the phosphorylation site of Ser68.
Isotype:	IgG
Specificity:	Phospho-ATRIP (Ser68) Antibody detects endogenous levels of ATRIP only when phosphorylated at Serine 68.
Predicted Reactivity:	Pig,Bovine,Sheep,Rabbit,Dog,Chicken
Purification:	The antibody is from purified rabbit serum by affinity purification via sequential chromatography on phospho- and non-phospho-peptide affinity columns.

Target Details

Target:	ATRIP
---------	-------

Target Details

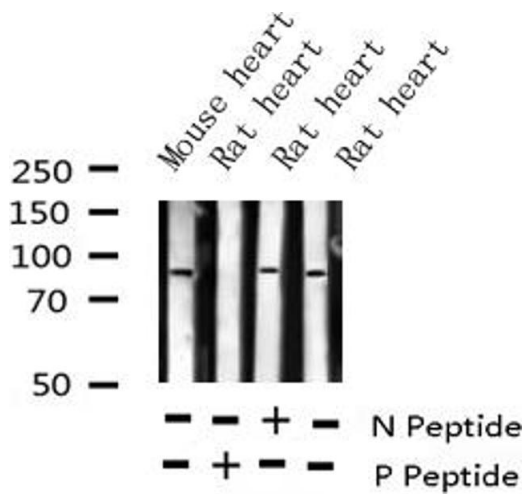
Alternative Name:	ATRIP (ATRIP Products)
Background:	Description: Required for checkpoint signaling after DNA damage. Required for ATR expression, possibly by stabilizing the protein. Gene: ATRIP
Molecular Weight:	80kDa
Gene ID:	84126
UniProt:	Q8WXE1

Application Details

Application Notes:	WB 1:500-1:2000, IF/ICC 1:100-1:500, ELISA(peptide) 1:20000-1:40000
Restrictions:	For Research Use only

Handling

Format:	Liquid
Concentration:	1 mg/mL
Buffer:	Rabbit IgG in phosphate buffered saline , pH 7.4, 150 mM NaCl, 0.02 % sodium azide and 50 % glycerol.
Preservative:	Sodium azide
Precaution of Use:	This product contains Sodium azide: a POISONOUS AND HAZARDOUS SUBSTANCE which should be handled by trained staff only.
Storage:	-20 °C
Storage Comment:	Store at -20 °C. Stable for 12 months from date of receipt.
Expiry Date:	12 months



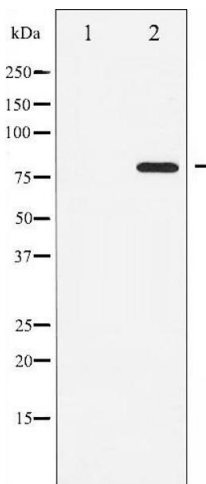
Western Blotting

Image 1. Western blot analysis of Phospho-ATRIP (Ser68) expression in various lysates



Immunofluorescence (fixed cells)

Image 2. ABIN6267677 staining NIH-3T3 by IF/ICC. The sample were fixed with PFA and permeabilized in 0.1% Triton X-100, then blocked in 10% serum for 45 minutes at 25°C. The primary antibody was diluted at 1/200 and incubated with the sample for 1 hour at 37°C. An Alexa Fluor 594 conjugated goat anti-rabbit IgG (H+L) Ab, diluted at 1/600, was used as the secondary antibody.



Western Blotting

Image 3. Western blot analysis of ATRIP phosphorylation expression in NIH-3T3 whole cell lysates, The lane on the left is treated with the antigen-specific peptide.