

Datasheet for ABIN6255484 anti-ERN1 antibody (pSer724)



[Go to Product page](#)

1 Image

Overview

Quantity:	100 µL
Target:	ERN1
Binding Specificity:	pSer724
Reactivity:	Human, Mouse, Rat
Host:	Rabbit
Clonality:	Polyclonal
Conjugate:	This ERN1 antibody is un-conjugated
Application:	Western Blotting (WB), ELISA

Product Details

Immunogen:	Synthetic peptide corresponding to Human IRE1 around the phosphorylation site of Ser724.
Isotype:	IgG
Specificity:	Phospho-IRE1 (Ser724) Antibody detects endogenous levels of IRE1 only when phosphorylated at Ser724.
Predicted Reactivity:	Pig,Bovine,Horse,Sheep,Rabbit,Dog,Chicken,Xenopus
Purification:	The antibody is from purified rabbit serum by affinity purification via sequential chromatography on phospho- and non-phospho-peptide affinity columns.

Target Details

Target:	ERN1
---------	------

Target Details

Alternative Name:	ERN1 (ERN1 Products)
Background:	<p>Description: Serine/threonine-protein kinase and endoribonuclease that acts as a key sensor for the endoplasmic reticulum unfolded protein response (UPR) (PubMed:11779464, PubMed:11175748, PubMed:12637535, PubMed:9637683, PubMed:21317875). In unstressed cells, the endoplasmic reticulum luminal domain is maintained in its inactive monomeric state by binding to the endoplasmic reticulum chaperone HSPA5/BiP (PubMed:21317875). Accumulation of misfolded protein in the endoplasmic reticulum causes release of HSPA5/BiP, allowing the luminal domain to homodimerize, promoting autophosphorylation of the kinase domain and subsequent activation of the endoribonuclease activity (PubMed:21317875). The endoribonuclease activity is specific for XBP1 mRNA and excises 26 nucleotides from XBP1 mRNA (PubMed:11779464, PubMed:24508390, PubMed:21317875). The resulting spliced transcript of XBP1 encodes a transcriptional activator protein that up-regulates expression of UPR target genes (PubMed:11779464, PubMed:24508390, PubMed:21317875).</p> <p>Gene: ERN1</p>
Molecular Weight:	110 kDa
Gene ID:	2081
UniProt:	O75460
Pathways:	ER-Nucleus Signaling , Unfolded Protein Response

Application Details

Application Notes:	WB 1:1000-3000, ELISA(peptide) 1:20000-1:40000
Restrictions:	For Research Use only

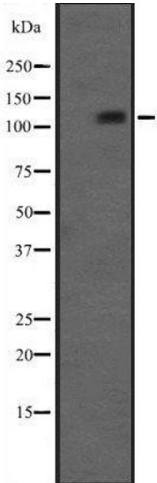
Handling

Format:	Liquid
Concentration:	1 mg/mL
Buffer:	Rabbit IgG in phosphate buffered saline , pH 7.4, 150 mM NaCl, 0.02 % sodium azide and 50 % glycerol.
Preservative:	Sodium azide
Precaution of Use:	This product contains Sodium azide: a POISONOUS AND HAZARDOUS SUBSTANCE which should be handled by trained staff only.

Handling

Storage:	-20 °C
Storage Comment:	Store at -20 °C. Stable for 12 months from date of receipt.
Expiry Date:	12 months

Images



Western Blotting

Image 1. Western blot analysis IRE1 (phospho S724) using HT29 whole cell lysates