



[Go to Product page](#)

Datasheet for ABIN6255485

## anti-alpha Adducin antibody (pSer726)

### 10 Images

#### Overview

Quantity:	100 µL
Target:	alpha Adducin (ADD1)
Binding Specificity:	pSer726
Reactivity:	Human, Mouse, Rat
Host:	Rabbit
Clonality:	Polyclonal
Conjugate:	This alpha Adducin antibody is un-conjugated
Application:	Western Blotting (WB), Immunohistochemistry (IHC), ELISA, Immunofluorescence (IF), Immunocytochemistry (ICC)

#### Product Details

Immunogen:	A synthesized peptide derived from human ADD1 around the phosphorylation site of Ser726.
Isotype:	IgG
Specificity:	Phospho-ADD1 (Ser726) Antibody detects endogenous levels of ADD1 only when phosphorylated at Serine 726.
Predicted Reactivity:	Zebrafish,Bovine,Horse,Dog,Xenopus
Purification:	The antibody is from purified rabbit serum by affinity purification via sequential chromatography on phospho- and non-phospho-peptide affinity columns.

#### Target Details

Target:	alpha Adducin (ADD1)
---------	----------------------

## Target Details

---

Alternative Name:	ADD1,ADD2 ( <a href="#">ADD1 Products</a> )
Background:	Description: Membrane-cytoskeleton-associated protein that promotes the assembly of the spectrin-actin network. Binds to calmodulin. Gene: ADD1
Molecular Weight:	80kDa
Gene ID:	118, 119
UniProt:	<a href="#">P35611</a> , <a href="#">P35612</a>
Pathways:	<a href="#">Negative Regulation of Hormone Secretion</a> , <a href="#">Regulation of Actin Filament Polymerization</a> , <a href="#">Regulation of Lipid Metabolism by PPARalpha</a> , <a href="#">ER-Nucleus Signaling</a>

## Application Details

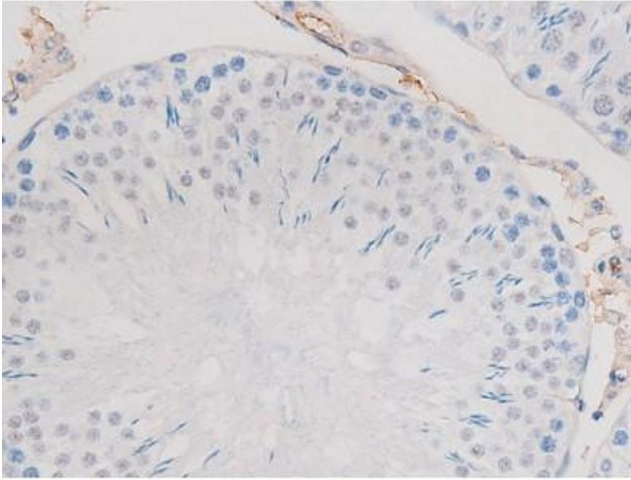
---

Application Notes:	WB 1:500-1:2000, IHC 1:50-1:200, IF/ICC 1:100-1:500, ELISA(peptide) 1:20000-1:40000
Restrictions:	For Research Use only

## Handling

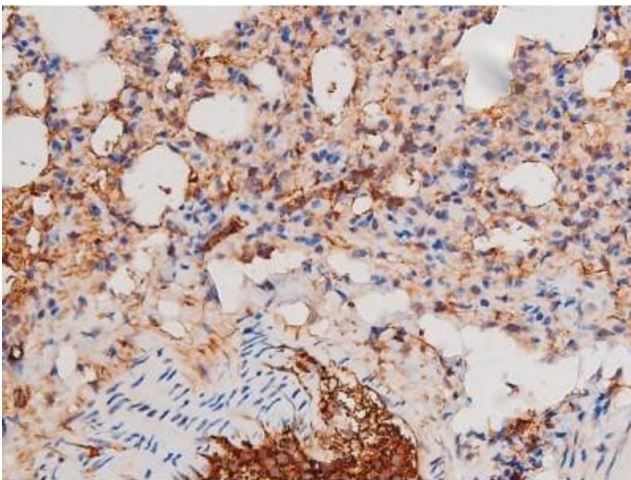
---

Format:	Liquid
Concentration:	1 mg/mL
Buffer:	Rabbit IgG in phosphate buffered saline , pH 7.4, 150 mM NaCl, 0.02 % sodium azide and 50 % glycerol.
Preservative:	Sodium azide
Precaution of Use:	This product contains Sodium azide: a POISONOUS AND HAZARDOUS SUBSTANCE which should be handled by trained staff only.
Storage:	-20 °C
Storage Comment:	Store at -20 °C. Stable for 12 months from date of receipt.
Expiry Date:	12 months



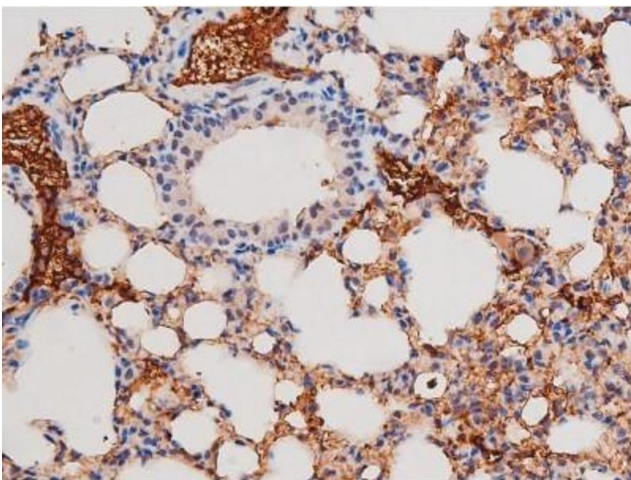
#### Immunohistochemistry

**Image 1.** ABIN6267487 at 1/200 staining Rat testis tissue sections by IHC-P. The tissue was formaldehyde fixed and a heat mediated antigen retrieval step in citrate buffer was performed. The tissue was then blocked and incubated with the antibody for 1.5 hours at 22°C. An HRP conjugated goat anti-rabbit antibody was used as the secondary.



#### Immunohistochemistry

**Image 2.** ABIN6267487 at 1/200 staining Mouse lung tissue sections by IHC-P. The tissue was formaldehyde fixed and a heat mediated antigen retrieval step in citrate buffer was performed. The tissue was then blocked and incubated with the antibody for 1.5 hours at 22°C. An HRP conjugated goat anti-rabbit antibody was used as the secondary.



#### Immunohistochemistry

**Image 3.** ABIN6267487 at 1/200 staining Mouse lung tissue sections by IHC-P. The tissue was formaldehyde fixed and a heat mediated antigen retrieval step in citrate buffer was performed. The tissue was then blocked and incubated with the antibody for 1.5 hours at 22°C. An HRP conjugated goat anti-rabbit antibody was used as the secondary.

Please check the [product details page](#) for more images. Overall 10 images are available for ABIN6255485.