

Datasheet for ABIN6255538  
**anti-IKBKG antibody (pSer85)**

## 3 Images

[Go to Product page](#)

## Overview

Quantity:	100 µL
Target:	IKBKG
Binding Specificity:	pSer85
Reactivity:	Human, Mouse
Host:	Rabbit
Clonality:	Polyclonal
Conjugate:	This IKBKG antibody is un-conjugated
Application:	Western Blotting (WB), ELISA, Immunofluorescence (IF), Immunocytochemistry (ICC)

## Product Details

Immunogen:	A synthesized peptide derived from human IKK gamma around the phosphorylation site of Ser85.
Isotype:	IgG
Specificity:	Phospho-IKK gamma (Ser85) Antibody detects endogenous levels of IKK gamma only when phosphorylated at Ser85.
Predicted Reactivity:	Pig,Horse,Rabbit
Purification:	The antibody is from purified rabbit serum by affinity purification via sequential chromatography on phospho- and non-phospho-peptide affinity columns.

## Target Details

Target:	IKBKG
---------	-------

## Target Details

Alternative Name:	IKBKG ( <a href="#">IKBKG Products</a> )
Background:	<p>Description: Regulatory subunit of the IKK core complex which phosphorylates inhibitors of NF-kappa-B thus leading to the dissociation of the inhibitor/NF-kappa-B complex and ultimately the degradation of the inhibitor. Its binding to scaffolding polyubiquitin seems to play a role in IKK activation by multiple signaling receptor pathways. However, the specific type of polyubiquitin recognized upon cell stimulation (either 'Lys-63'-linked or linear polyubiquitin) and its functional importance is reported conflictingly. Also considered to be a mediator for TAX activation of NF-kappa-B. Could be implicated in NF-kappa-B-mediated protection from cytokine toxicity.</p> <p>Essential for viral activation of IRF3. Involved in TLR3- and IFIH1-mediated antiviral innate response, this function requires 'Lys-27'-linked polyubiquitination.</p> <p>Gene: IKBKG</p>
Molecular Weight:	47 kDa
Gene ID:	8517
UniProt:	<a href="#">Q9Y6K9</a>
Pathways:	<a href="#">NF-kappaB Signaling</a> , <a href="#">RTK Signaling</a> , <a href="#">TCR Signaling</a> , <a href="#">TLR Signaling</a> , <a href="#">Fc-epsilon Receptor Signaling Pathway</a> , <a href="#">Activation of Innate immune Response</a> , <a href="#">M Phase</a> , <a href="#">Production of Molecular Mediator of Immune Response</a> , <a href="#">Hepatitis C</a> , <a href="#">Protein targeting to Nucleus</a> , <a href="#">Toll-Like Receptors Cascades</a> , <a href="#">BCR Signaling</a> , <a href="#">Ubiquitin Proteasome Pathway</a> , <a href="#">S100 Proteins</a>

## Application Details

Application Notes:	WB 1:500-1:2000, IF/ICC 1:100-1:500, ELISA(peptide) 1:20000-1:40000
Restrictions:	For Research Use only

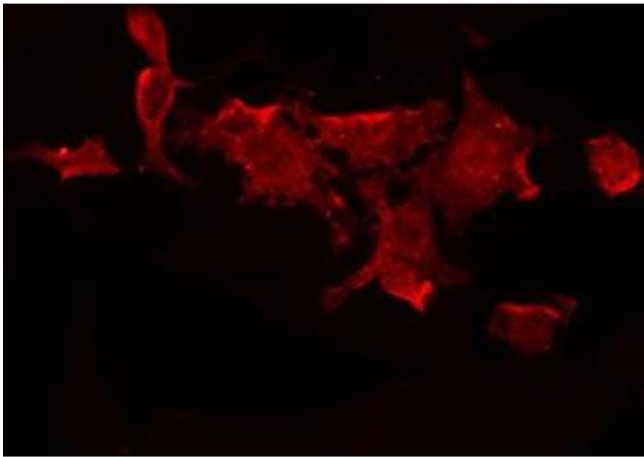
## Handling

Format:	Liquid
Concentration:	1 mg/mL
Buffer:	Rabbit IgG in phosphate buffered saline , pH 7.4, 150 mM NaCl, 0.02 % sodium azide and 50 % glycerol.
Preservative:	Sodium azide
Precaution of Use:	This product contains Sodium azide: a POISONOUS AND HAZARDOUS SUBSTANCE which should be handled by trained staff only.

Handling

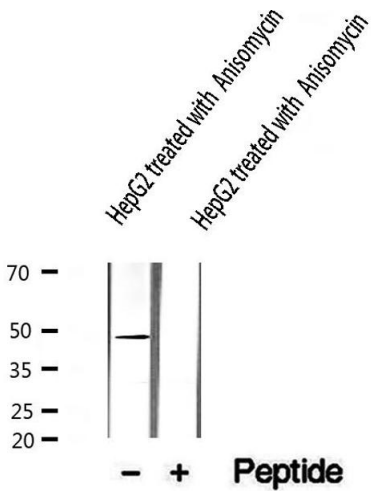
Storage:	-20 °C
Storage Comment:	Store at -20 °C. Stable for 12 months from date of receipt.
Expiry Date:	12 months

Images



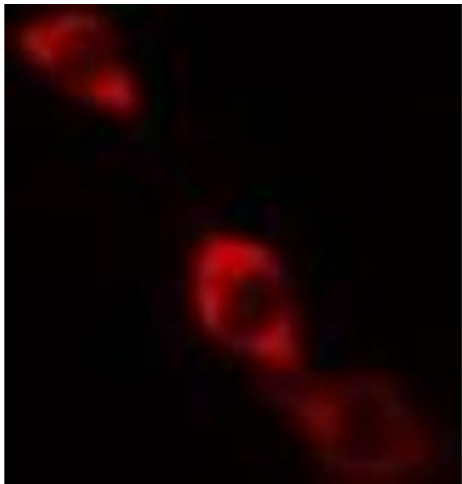
Immunofluorescence (fixed cells)

**Image 1.** ABIN6268977 staining 293 by IF/ICC. The sample were fixed with PFA and permeabilized in 0.1% Triton X-100, then blocked in 10% serum for 45 minutes at 25°C. The primary antibody was diluted at 1/200 and incubated with the sample for 1 hour at 37°C. An Alexa Fluor 594 conjugated goat anti-rabbit IgG (H+L) Ab, diluted at 1/600, was used as the secondary antibody



Western Blotting

**Image 2.** Western blot analysis of extracts from HepG2, using IKK-γ (Phospho-Ser85) Antibody.



Immunofluorescence (fixed cells)

**Image 3.** ABIN6268977 staining HeLa cells by IF/ICC. The sample were fixed with PFA and permeabilized in 0.1% Triton X-100, then blocked in 10% serum for 45 minutes at 25°C. The primary antibody was diluted at 1/200 and incubated with the sample for 1 hour at 37°C. An Alexa Fluor 594 conjugated goat anti-rabbit IgG (H+L) antibody (Cat.# S0006), diluted at 1/600, was used as secondary antibody